

TAKING
COOPERATION
FORWARD

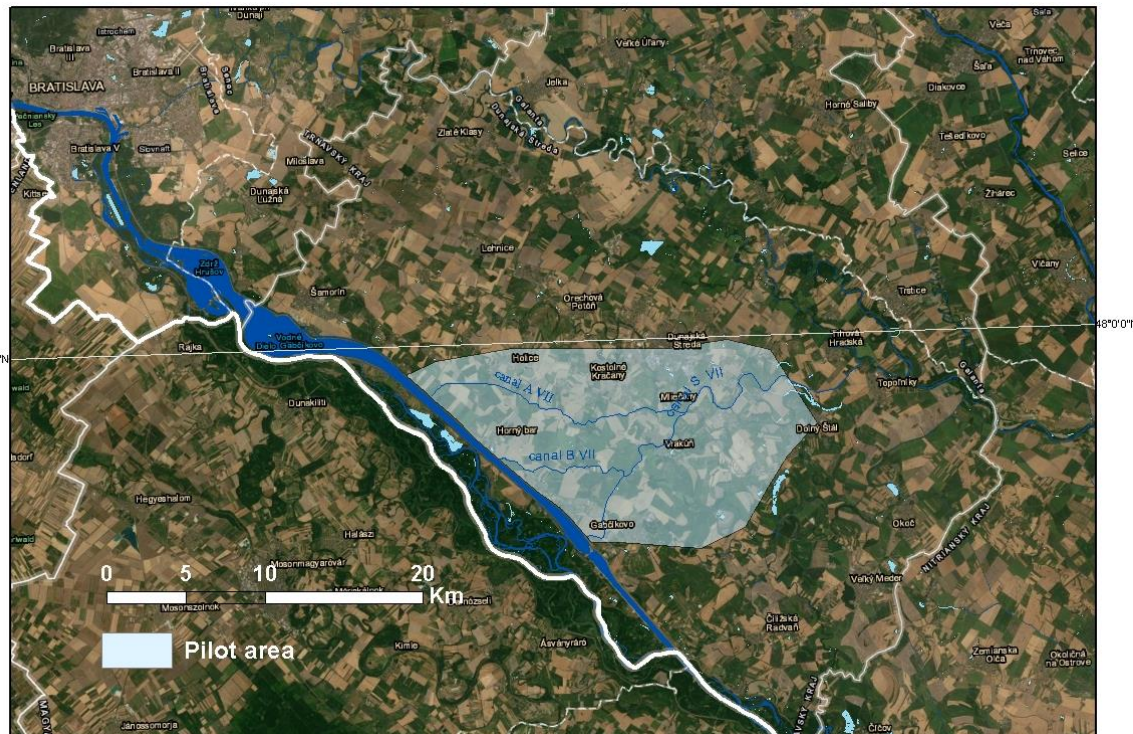
📍 CE1464 DEEPWATER-CE - EUSDR PA4 SG meeting (9 June 2021)

💬 **Current status** - fieldwork and feasibility study guidance

👤 Presentation by: PP6 Water Research Institute

Recharge Dam MAR type

Žitný ostrov pilot area



Fieldwork status:

- ✓ Water flow/water level measurements in canals
 - ✓ Soil sampling to measure physical and hydro-physical characteristics
 - ✓ Measurements of hydraulic conductivity using auger hole method
 - ✓ Groundwater table measurements in probes
- + MODFLOW and HYDRUS 2D modelling



Carried out in cooperation with the Slovak University of Technology and Water Research Institute



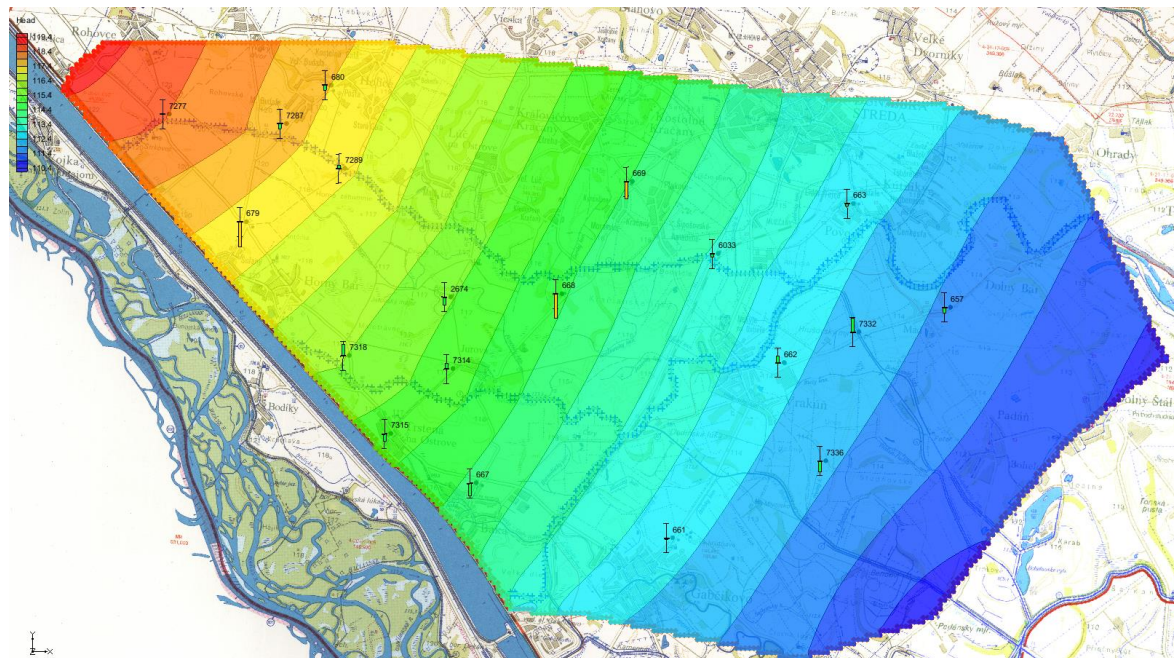
CURRENT STATUS OF PILOT ACTIVITIES

Measured water level in channels in m a.s.l.(1.5.2021)

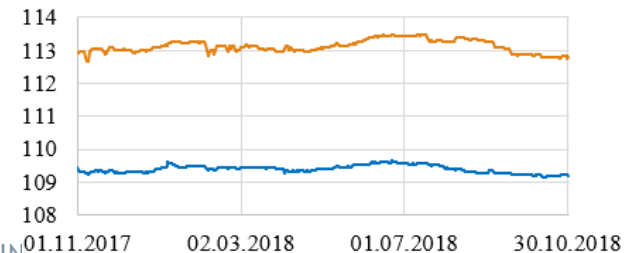
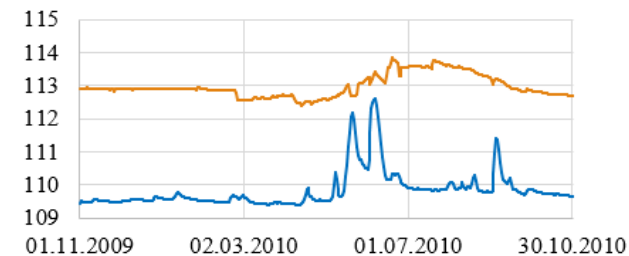
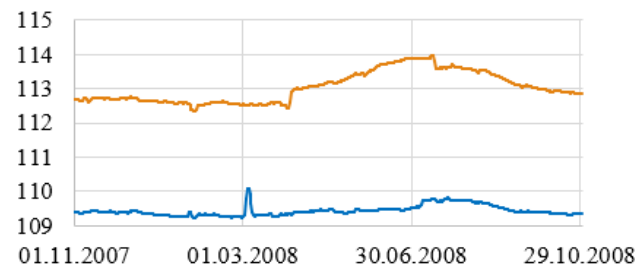


MODFLOW MODEL

First modelled output - groundwater tables (m a.s.l.) - May/Sep 2010



— 9914_Gabčíkovo — 9924_Topolníky



ACTIVITIES...

Done so far:

D.T.3.2.5 Common methodological guidance for DEEPWATER-CE MAR pilot feasibility studies

D.T.3.5.1 Report on the desk analysis of the pilot feasibility study for MAR deployment in porous aquifers in areas used for agricultural purposes

Upcoming:

- ☐ Finish fieldwork and mathematical modelling (Modflow + Hydrus 2D)
- ☐ Prepare site characterization + risk management
- ☐ Provide inputs to Cost-Benefit Analysis + Environmental Impact Assessment
- ☐ Compile feasibility study
- ☐ ...and WTP4 „Development of policy recommendations and national action plans“



Thank you for your kind attention

<https://www.interreg-central.eu/Content.Node/DEEPWATER-CE.html>

andrea.vranovska@vuvh.sk

