

OVERVIEW OF CURRENT FINANCIAL INSTRUMENTS ON TRANSNATIONAL WATER MANAGEMENT, ENVIRONMENTAL RISKS AND BIODIVERSITY



Zsuzsanna Kocsis-Kupper
Danube Region Strategy
Water Quality Priority Area
Coordination Team

EUSDR ANNUAL FORUM BUDAPEST
Funding opportunities for Pillar II of the EUSDR

Budapest

19/10/2017



Key question

**Funding is
available**

BUT



WHERE DO WE FIND IT?



COMMITMENT APPROPRIATIONS FOR THE 2014-2020 PERIOD

EUROPE 2020

INCLUSIVE SMART SUSTAINABLE

GLOBAL EUROPE 8 882

SECURITY AND CITIZENSHIP 2 670

COMPETITIVENESS FOR JOBS AND GROWTH 18 618

ECONOMIC, SOCIAL AND TERRITORIAL COHESION 50 822

SUSTAINABLE NATURAL RESOURCES 63 104

POLICY AREAS

EDUCATION AND CULTURE

EXTERNAL ACTION

HOME AFFAIRS

CITIZENS

JUSTICE

CIVIL PROTECTION

CUSTOM UNION, TAXATION AND FIGHT AGAINST FRAUD

RESEARCH AND INNOVATION

HEALTH AND CONSUMERS

SOCIAL AFFAIRS

COMPETITIVENESS AND SMES

INNOVATIVE FINANCIAL INSTRUMENTS AND INFRASTRUCTURE

AGRICULTURE AND RURAL DEVELOPMENT

ENVIRONMENT AND CLIMATE CHANGE

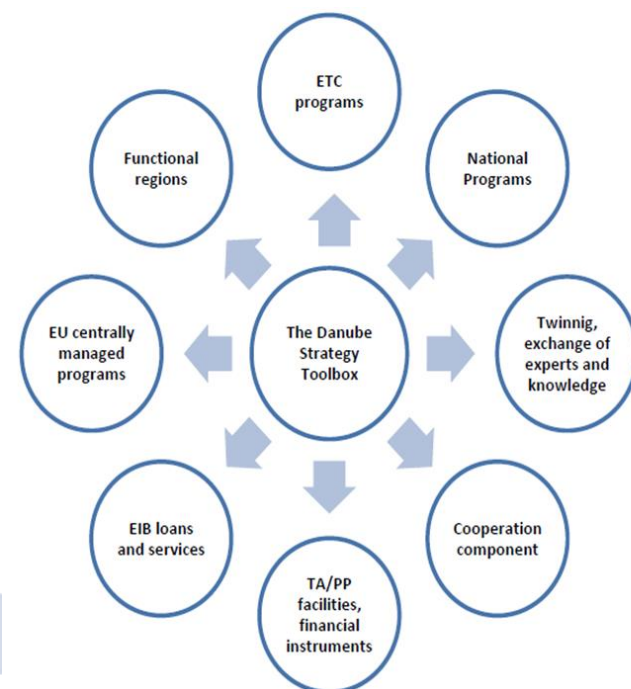
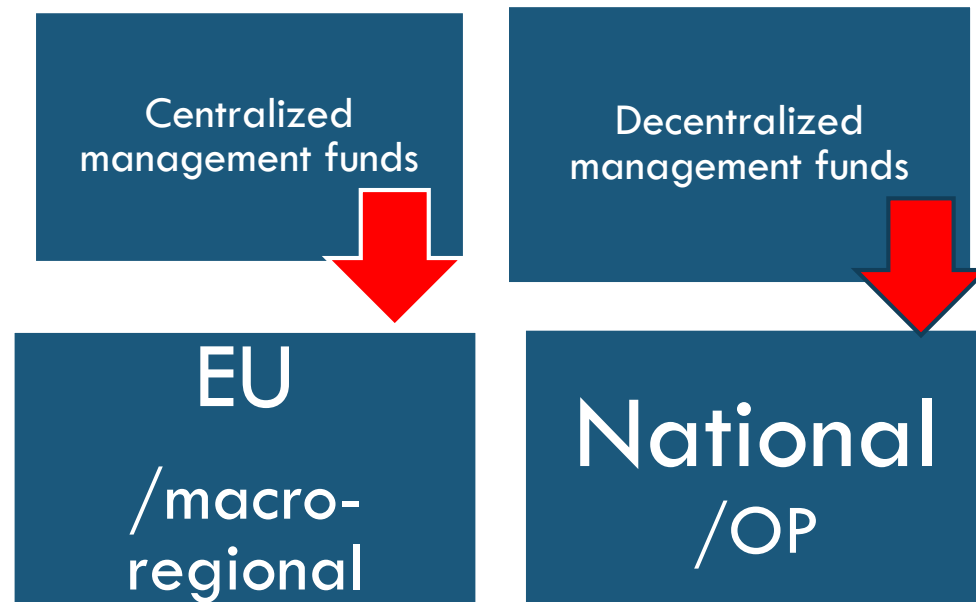
FISHERIES POLICIES

MARITIME AND FISHERIES

Commitment appropriations in EUR million

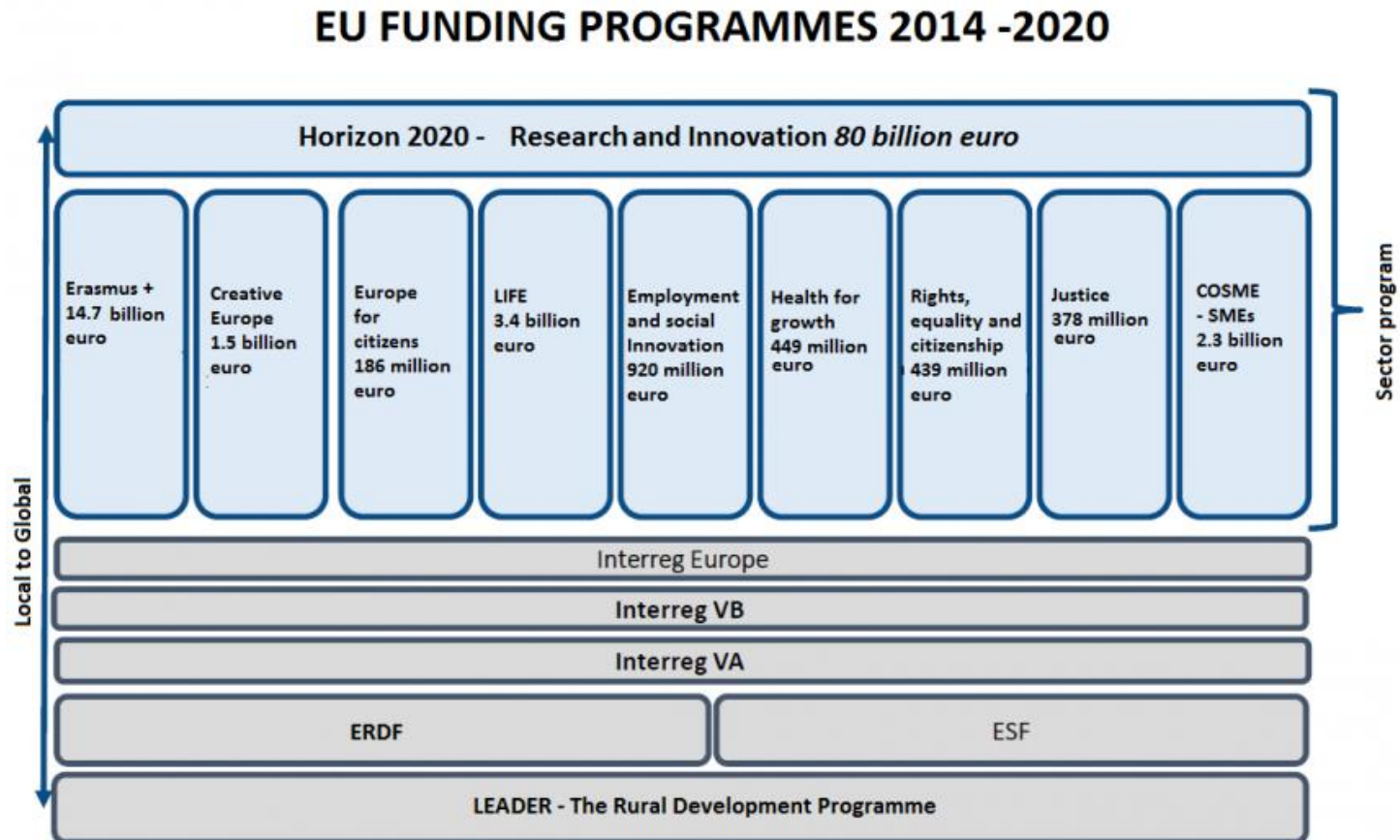
EUROPE 2020 TARGETS							
EMPLOYMENT	R&D	FIGHTING POVERTY	EDUCATION		CLIMATE CHANGE AND ENERGY SUSTAINABILITY		
75%	3%	20 Mil	10%	40%	-20%	20%	20%
of the 20 64 year- olds to be employed	of the EU GDP to be invested in R&D	fewer people in or at risk of poverty and social exclusion	ceiling for early school leaving	of 30 - 34 year olds completing third level education	greenhouse gas emissions than 1990	of energy from renewables	increase in energy efficiency

Financial instruments: different channels



EU level	• Regulatory framework
National Level	• Partnership Agreement
National/Regional Level	• Operational Programmes (OPs)

Financial instruments: different channels



ESI Funds (ESIFs)

"Structural and Investment Funds" 2014-2020 – shared management

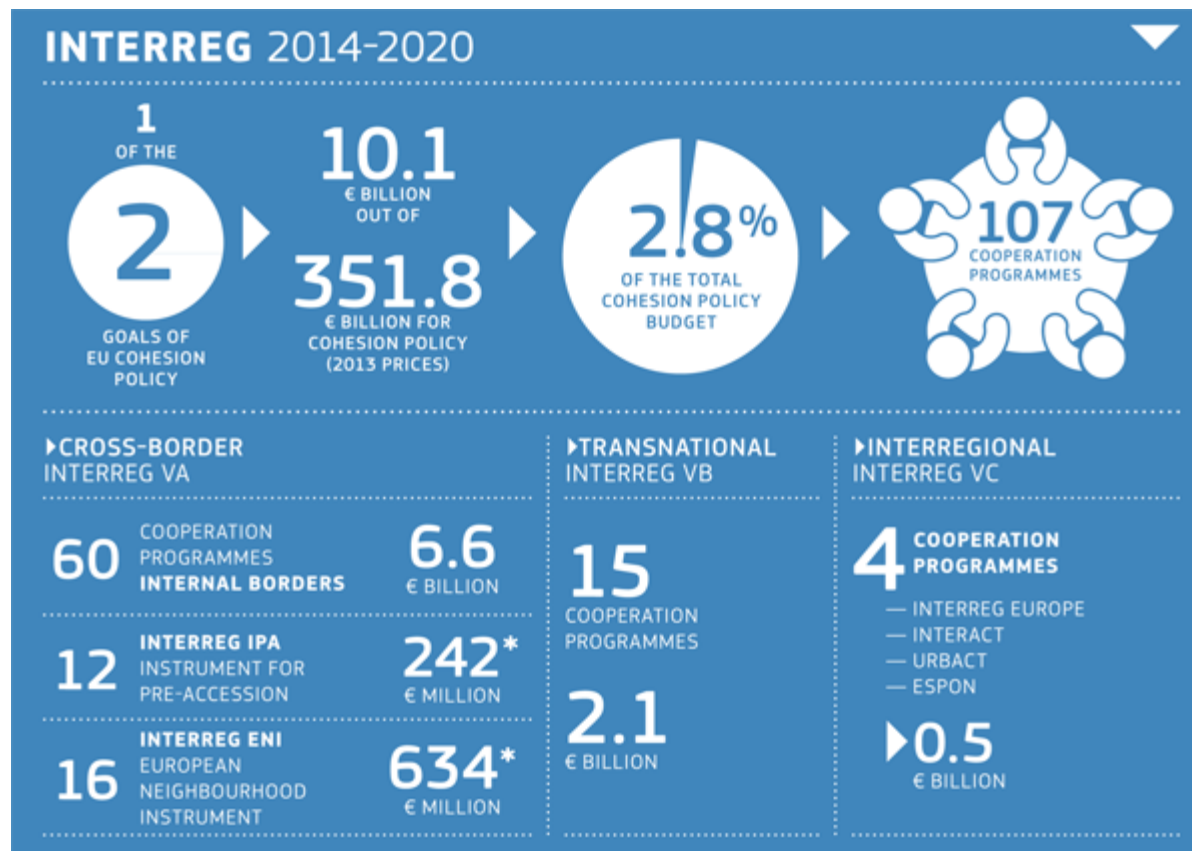


4

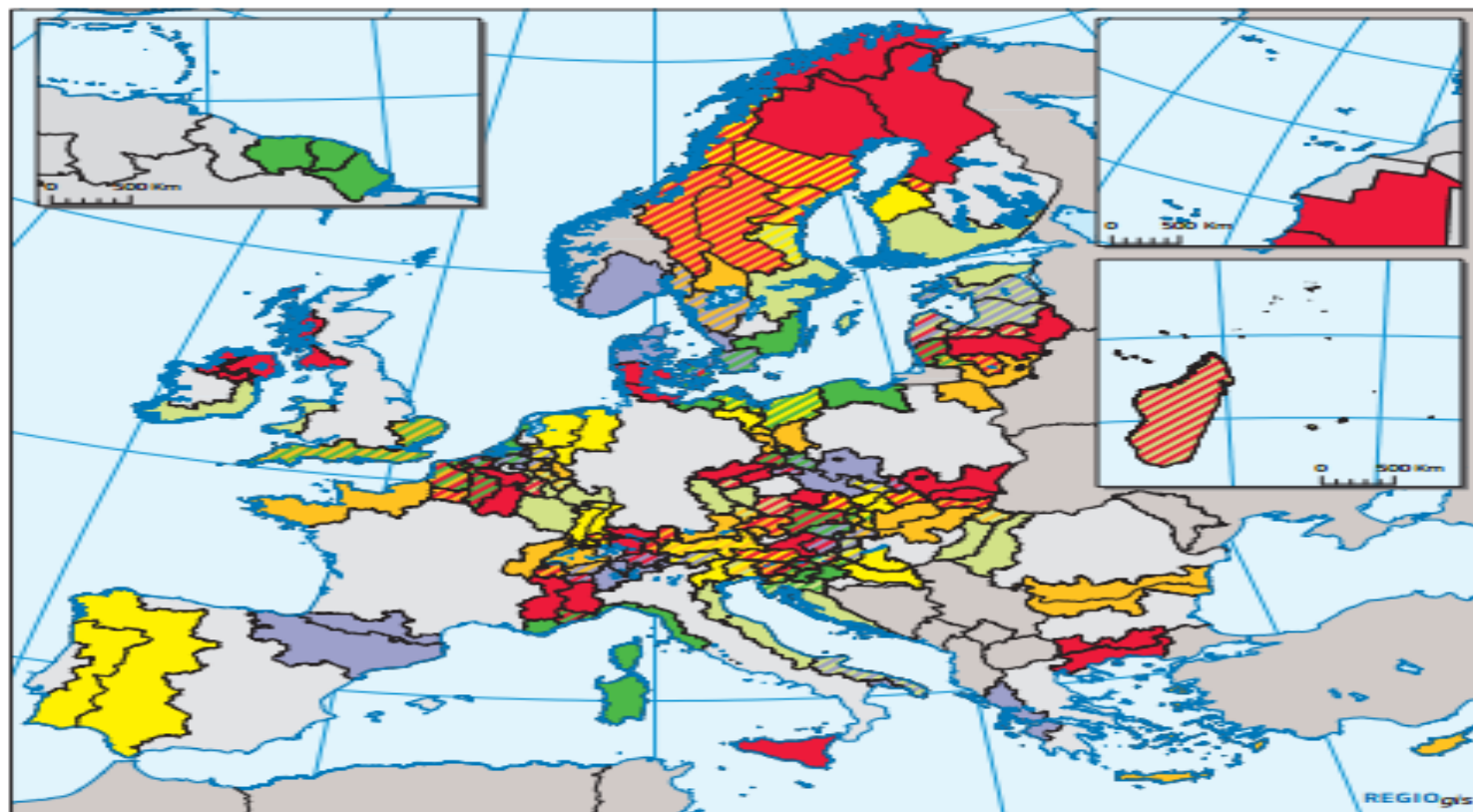
With a budget of EUR **454 billion** for 2014-2020, the European structural and investment funds (ESIFs) are the European Union's (EU's) main investment policy tool. (**76% EU budget**)

- the European Regional Development Fund (ERDF),
- the European Social Fund (ESF),
- the Cohesion Fund (CF),
- the European Agricultural Fund for Rural Development (EAFRD) and
- the European Maritime and Fisheries Fund (EMFF).
- The ESIFs contribute to the Investment Plan for Europe and complement the European Fund for Strategic Investments (EFSI) in several ways: by leveraging public and private investment, supporting structural reforms, and improving access to funding.

INTERREG 2014-2020



Cross border cooperation-examples



ERDF Cross-border cooperation programmes 2014-2020

This map shows the areas of the cross-border programmes co-financed by the ERDF.
Each programme area is shown with a specific colour.
Hatched areas are part of two or more programme areas simultaneously.

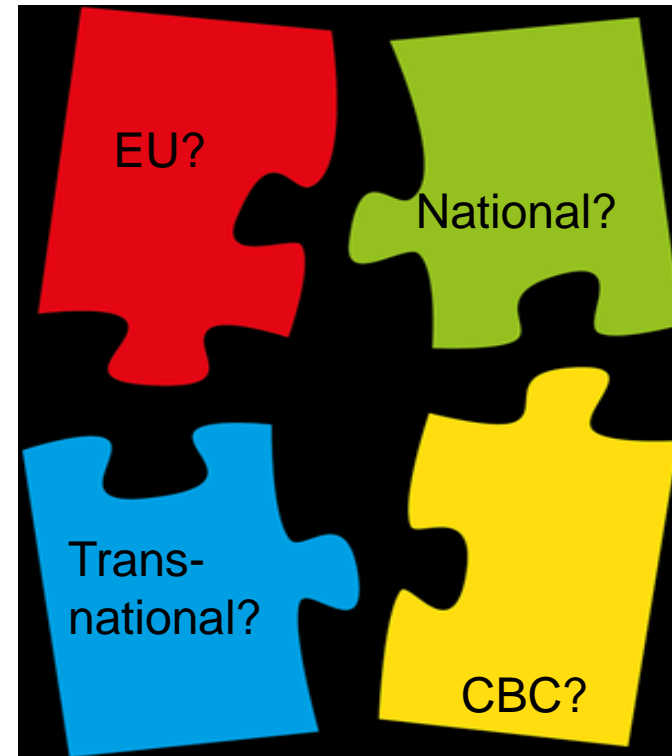
Source: DG REGIO

Problem

Usually no specific
heading for water, env.
risks or biodiversity



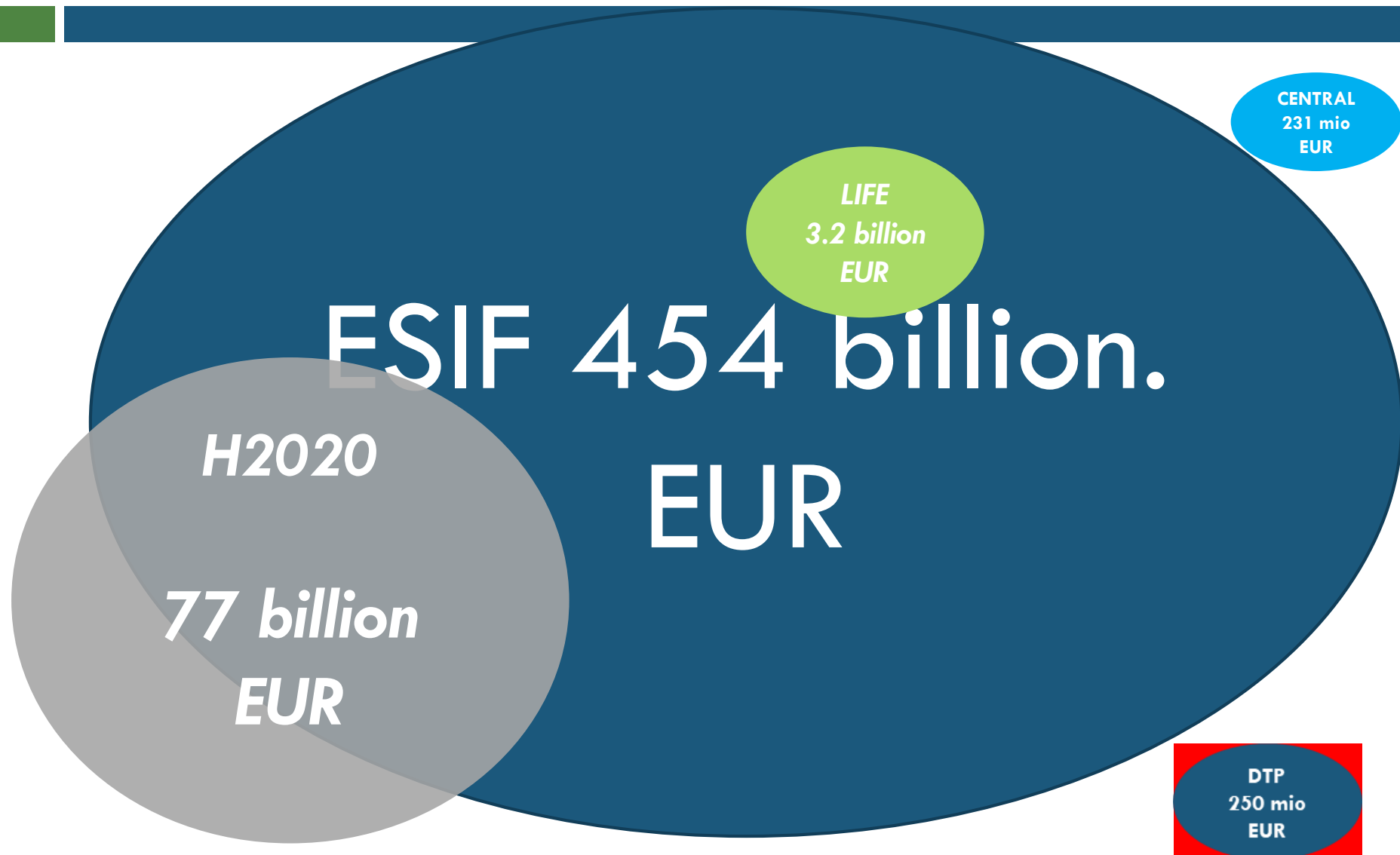
The menu: different channels



The menu: different options



Financial Volume of selected Instruments

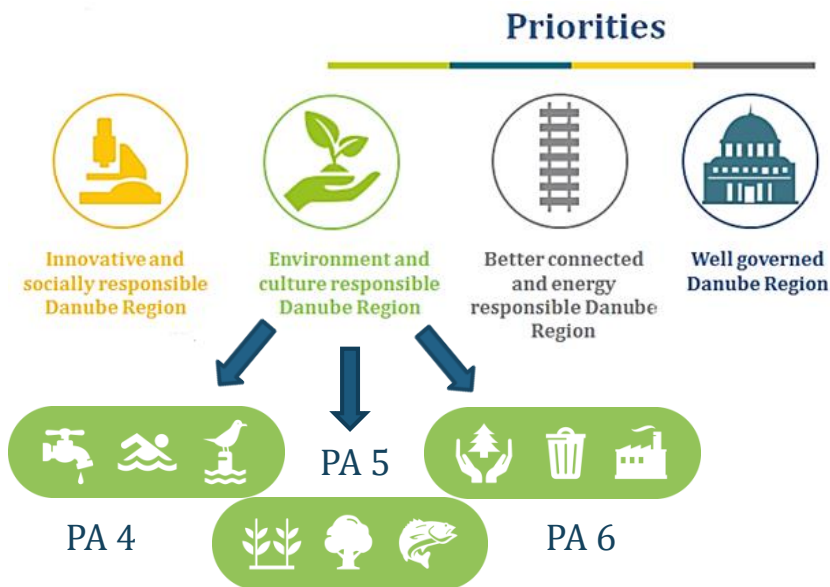


First step

- Clear targets: the project idea is ready
➔ **search for appropriate funding**



General characteristics of the Programme



Links to EUSDR Pillar II

SMF Call: open till 7 December 2017

- Max. project budget 50,000 EUR
- Fixed project duration: 12 months

3rd Call – TBD (possibly from end 2018–early 2019)

- **Ca. 17.7 M EUR for DTP Priority 2 Environment & Culture** (out of total 40 M EUR)



- Funding sources: ERDF / IPA / ENI
- **85%** EU funding rate
- Eligible partners: Public / International / Private*;
- Typical project: 1,5 - 3 M EUR with duration of 30-36 months (regular project)
- Ca. 10% of submitted proposals selected for financing

General characteristics of the Programme

Horizon 2020



- **Thematic objectives to be supported by the programme and its assimilation to the EUSDR priority areas:** Building a low-carbon, climate resilient future: climate action in support of the Paris Agreement; Greening the economy in line with the Sustainable Development Goals (SDGs)
- **Available budget per categories to be supported:** 2018: 703,5 m EUR, 2019: 762,95 m EUR, 2020: 643,95 m EUR
- **Expected date of calls, submission dates:** opening: 7 November 2017, deadlines: 27 February, 2018 (1st stage), 4 September, 2018 (2nd stage), 19 February, 2019 (1st stage), 4 September, 2019 (2nd stage)
- **Eligible partners:** participants from Member States, Associated States, Third Countries
- **Typical project size (budget) and duration:** budget: varies from topic to topic, duration: varies, most common 3 years
- **Expected oversubscribed based on the experiences:** Average success rate for the whole of Horizon 2020: 11,6%, it varies from programme to programme
- Relevant websites, contacts <https://ec.europa.eu/programmes/horizon2020/>,
<http://ec.europa.eu/research/participants/portal/desktop/en/home.html>,
<http://www.h2020.gov.hu/>

General characteristics of the LIFE Programme



- Priority areas and thematic objectives to be supported by the LIFE programme and its assimilation to the EUSDR priority areas: <http://ec.europa.eu/environment/life/funding/life.htm>

Environment sub-programme priority areas	Budget 2017	Budget 2014-2020
Environment and Resource Efficiency (ENV)	83 M €	495 M €
The ENV priority area will develop, test and demonstrate approaches, best practices, solutions and integrated approaches to environmental challenges, as well as improving the related knowledge base		
Nature and Biodiversity (NAT)	101,9 M €	610 M €
The (NAT) priority area will develop, test and demonstrate best practices, solutions and integrated approaches to contribute to the development and implementation of nature and biodiversity policy and legislation, as well as improving the related knowledge base		
Environmental Governance and Information (GIE)	16,9 M €	163 M €
The GIE priority area will promote awareness-raising on environmental matters, support the communication, management and dissemination of environmental information, and promote better environmental governance by broadening stakeholder involvement		

General characteristics of the Programme

INTERREG CENTRAL EUROPE

www.interreg-central.eu

- Thematic objectives to be supported by the programme and its assimilation to the EUSDR priority areas;
4 Priority Axes (including 10 programme specific objectives - SOs):
 - P1 Innovation (TO 1) → EUSDR Priority areas 7, 8 and 9
 - P2 Low carbon (TO 4) → EUSDR Priority area 2
 - P3 Environment and culture (TO 6) → EUSDR Priority areas 3, 4, 5 and 6
 - P 4 Transport (TO 7) → EUSDR Priority areas 1A and 1B
- Available budget per categories to be supported;
Total programme budget for projects: ca. 231 m EUR ERDF (out of which ca. 88,8 m EUR ERDF for projects under Priority axis 3 Environment and culture)
- Expected date of calls, submission dates and relevant framework budgets;
3rd call for proposals
 - Launched on 21 September 2017
 - Closure on 25 January 2018
 - One-step procedure, web-based submission
 - Programme specific objectives on environmental and water related topics remain fully open (while thematic focus for four SOs on innovation, energy and culture topics, closing of SO on low carbon urban mobility) 1
 - Indicative call budget of 60 m EUR ERDF (out of which 20 m EUR ERDF for Priority axis 3 Environment and culture) 7

Useful sources

Danube Implementation Facility

- **Seed Money Facility** for project development & implementation
- **EuroAccess:** Online-tool for searching EU funding options
- www.danube-euroaccess.eu
- <http://www.danube-region.eu/funding/projects-and-initiatives>



International Financing Institutions:

- European Investment Bank:
<http://www.eib.org/infocentre/publications/all/the-eib-in-the-danube-region.htm>
- European Investment Advisory Hub
- EBRD, World Bank, etc.
- National, regional and local sources
- Private investments

What do we need further?



EUSDR tools 2016-2019



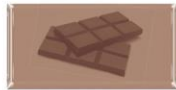
Seed Money Facility (DTP) open now!

- Danube Strategic Project Fund (via PA10) project selection ongoing



Different open possibilities

THE



TAKE A FEW PANTRY ESSENTIALS, ADD TWO FRESH INGREDIENTS
AND MAKE EVERYDAY EATING EXTRAORDINARY

KITCHEN



SHELF



Cook with what you
have or....find the best
programme for your idea



EVE O'SULLIVAN & ROSIE REYNOLDS

PHAIDON





Now time for your coffee sessions



Café discussions

3 times



Funding instrument	Topic/Round 1	Topic/Round 2	Topic/Round 3
	Water	Biodiversity	Environmental risks
	Environmental risks	Water	Biodiversity
	Biodiversity	Environmental risks	Water
	Environmental risks	Water	Biodiversity

Café tables

Funding instrument	Speaker
	Gusztáv Csomor
	Orsolya Tóth
	Ágnes Szijártó
	Monika Schoenerklee-Grasser

RELATED
PACS and
colleagues



Sitting



DTP

LIFE

Central

H2020

Contacts

<http://www.lifepalyzatok.eu/>

<http://ec.europa.eu/environment/life/funding/life.htm>

agnes.szijarto@fm.gov.hu



Gusztáv Csomor

Project Officer

Tel: +36 1 795 38 36

gusztav.csomor@interreg-danube.eu

www.interreg-danube.eu

CONTACTS



Monika Schönerklee-Grasser
Joint Secretariat | Interreg CENTRAL EUROPE Programme



www.interreg-central.eu



schoenerklee-grasser@interreg-central.eu



+43 1 8908088-2421



facebook.com/interregce



linkedin.com/in/interregce



twitter.com/interregce



TAKING COOPERATION FORWARD

16

www.nkfi.gov.hu

www.h2020.gov.hu

orsolya.toth2@nkfi.gov.hu

Tel.: +36 1 896 3744



Thank you for your kind attention

Zsuzsanna Kocsis-Kupper
EUSDR PA₄ HU Team

<http://www.danubewaterquality.eu/>