

EU Strategy for the Danube Region (EUSDR)

Second Stakeholder Seminar of the Water Quality (PA4) and the Environmental Risks (PA5) Priority Areas

"EUROPEAN FUNDING OPPORTUNITIES IN THE WATER SECTOR"

INTERREG CENTRAL EUROPE PROGRAMME

Monika Schönerklee-Grasser
Head of Evaluation and Monitoring Unit

JS Interreg CENTRAL EUROPE

General characteristics of the Programme

Interreg CENTRAL EUROPE is a transnational cooperation programme of the European Territorial Cooperation objective 2014-2020

Programme area: Austria, Croatia, Czech Republic, Germany (parts), Hungary, Italy (parts), Poland, Slovakia and Slovenia

Population: 146 Million people



Goal:



Cooperating beyond borders in central Europe to make our cities and regions better places to live and work.

Budget:



€ 246 Million ERDF (European Regional Development Fund)

Managing authority: City of Vienna (AT)

General characteristics of the Programme

Programme objective and priorities

CENTRAL EUROPE - Territorial needs

Cooperating beyond borders in central Europe to make our cities and regions better places to live and work

Priority axis 1
Cooperating on innovation to make CENTRAL EUROPE more competitive

Priority axis 2
Cooperating on low-carbon strategies in CENTRAL EUROPE

Priority axis 3
Cooperating on natural and cultural resources for sustainable growth in CENTRAL EUROPE

Priority axis 4
Cooperating on transport to better connect CENTRAL EUROPE

Specific objective 1.1

To improve sustainable linkages among actors of the innovation systems for strengthening regional innovation capacity in central Europe

Specific objective 2.1

To develop and implement solutions for increasing energy efficiency and renewable energy usage in public infrastructures

Specific objective 3.1

To improve integrated environmental management capacities for the protection and sustainable use of natural heritage and resources

Specific objective 4.1

To improve planning and coordination of regional passenger transport systems for better connections to national and European transport networks

Specific objective 1.2

To improve skills and entrepreneurial competences for advancing economic and social innovation in central European regions

Specific objective 2.2

To improve territorially based low carbon energy planning strategies and policies supporting climate change mitigation

Specific objective 3.2

To improve capacities for the sustainable use of cultural heritage and resources

Specific objective 4.2

To improve coordination among freight transport stakeholders for increasing multimodal environment-friendly freight solutions

Specific objective 2.3

To improve capacities for mobility planning in functional urban areas to lower CO2 emissions

Specific objective 3.3

To improve environmental management of functional urban areas to make them more liveable places

Thematic relevance for EUSDR PA 4/5

General characteristics of the Programme

Eligible partners

- a) National, regional and local **public bodies** (including EGTCs)
- b) **Private institutions**, including private companies, having legal personality
- c) **International organisations** acting under the national law of any CENTRAL EUROPE Member State or, with restrictions, under international law

- Private institutions can be lead partners in **all programme priorities**
- Private lead applicants must fulfil **minimum financial capacity requirements** (self-assessment tool)

General characteristics of the Programme

Geography

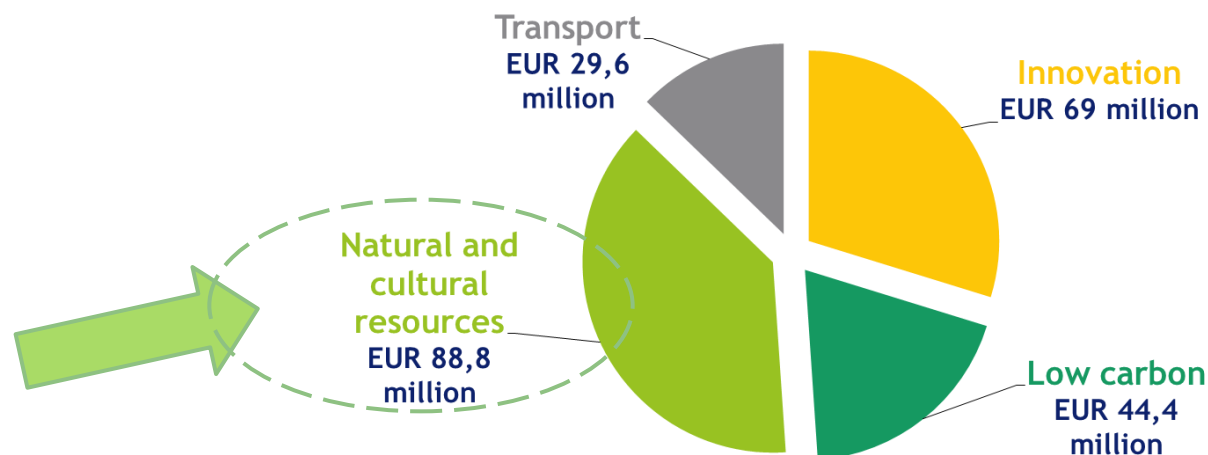
- Partnerships must be composed by at least **three financing partners from three countries**, at least two of them located in the CENTRAL EUROPE area
- Possible involvement of partners located outside the programme area (only in duly justified cases):
 - from other EU Member states (20 % flexibility)
 - Outside the EU (no ERDF co-financing, participation with own funds)



General characteristics of the Programme

Programme budget

- Total ERDF available is: **EUR 246,5 million EUR**
- Total programme budget is: **EUR 298,9 million EUR**
- ERDF allocation per priority:



- ERDF co-financing rate:
 - **85 %** (CZ, HR, HU, PL, SK, SI)
 - **80 %** (AT, DE, IT, other EU Member States)
- No pre-financing

General characteristics of the Programme

Programme specific objective 3.1:

To improve integrated environmental management capacities for the protection and sustainable use of natural heritage and resources

- Focus on integrated environmental management approaches and uptake into the public and private sector
- Reducing current and avoiding future usage conflicts
- Resource efficiency as guiding principle
- Capitalising on location factors
- Promoting sustainable regional development

General characteristics of the Programme

Potential actions to be funded under Programme specific objective 3.1:

- Increasing capacities of the public sector and related entities to **preserve, manage and use natural heritage and resources (including water, soil, fauna and flora)**, such as:
- Sustainable management of protected or highly valuable areas (e.g. biodiversity, landscapes, ecosystems etc.)
 - Sustainable use of natural resources for regional development
 - Innovative technologies/tools for effective integrated environmental management (e.g. remediation etc.)
 - Efficient management of natural resources in public institutions and enterprises (e.g. resource efficiency, closed loops etc.)
 - Harmonising environmental management concepts and tools to reduce negative climate change impacts
 - ...

General characteristics of the Programme

Programme specific objective 3.3:

To improve environmental management of functional urban areas to make them more liveable places

- Emphasis on integrated environmental management to tackle urban environmental problems related to both core areas and their hinterlands
- Cross-sectoral and multilevel governance contributing to better planning, management and decision making
- Reducing current and avoiding future usage conflicts
- Triggering follow-up investments for improving the quality of the urban environment

General characteristics of the Programme

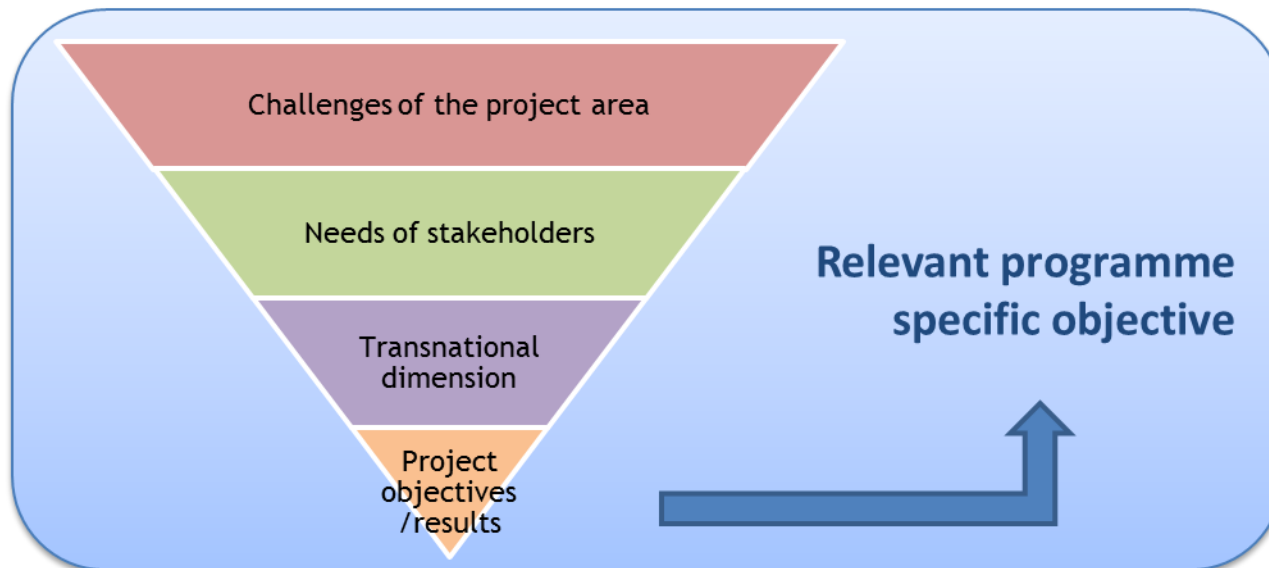
Potential actions to be funded under Programme specific objective 3.3:

- Improving **integrated environmental management capacities** in functional urban areas, such as:
- Managing and improving urban environmental quality (air, water, waste, soil, climate)
 - Urban environmental planning and management
 - Reducing land-use conflicts in cities (e.g. urban sprawl, shrinkage and fragmentation also in the view of social implications)
 - Rehabilitation and reactivation of brownfield sites
 - Environmental pilot applications to support the development towards smart cities (e.g. ICT applications, environmental technologies)
 - ...

General characteristics of the Programme

Result orientation

- Projects must tackle challenges, needs and potentials of the area, **building on existing knowledge**
- Projects must be able to deliver realistic results, driving a **measurable change** (improvement) of the initial situation in the area



General characteristics of the Programme

Project characteristics



Recommended financial size:

EUR 1 to 5 million total project budget (smaller or larger projects acceptable in exceptional cases)

Recommended maximum size of the partnership:

Up to 12 partners, should reflect project scope and stay manageable (larger partnerships not excluded if justified)

Recommended project duration:

30 to 36 months (maximum 48 months)



Submission procedure in the 2014-2020 period

1st Call (two-step call) - closure of step 2 on 27 November 2015

620 light applications received in step 1 out of which 91 were invited for step 2

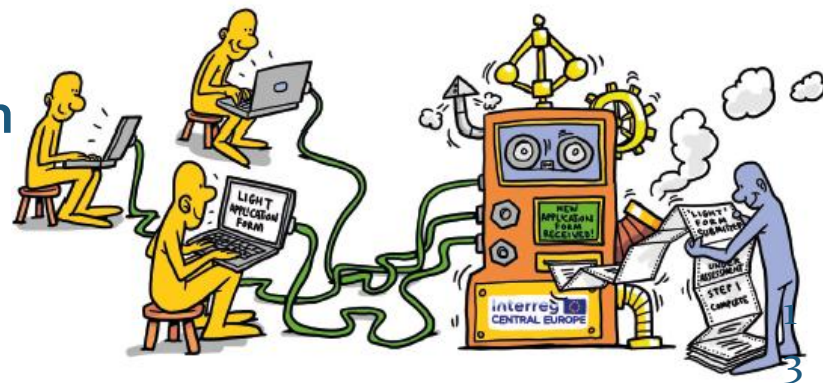
2nd Call - key features:

Procedure: competitive one-step call

Themes: open to all programme priorities and programme specific objectives

Submission: online application form

Launch: April 2016



Other relevant information

Programme support to applicants

- ✓ **Programme documents:**
 - Interreg CENTRAL EUROPE Cooperation Programme
 - Application package
 - Implementation manual
 - Thematic studies analysing 2007-2013 projects
- ✓ **National info-days**
- ✓ **Transnational lead applicant training**
- ✓ **Information and guidance by the network of national contact points**
- ✓ **Individual consultations with the joint secretariat**



www.interreg-central.eu

info@interreg-central.eu

Thank you for
the attention!