

Stakeholder Seminar: European funding opportunities in the water sector

19-20 November 2015, Budapest, Hungary

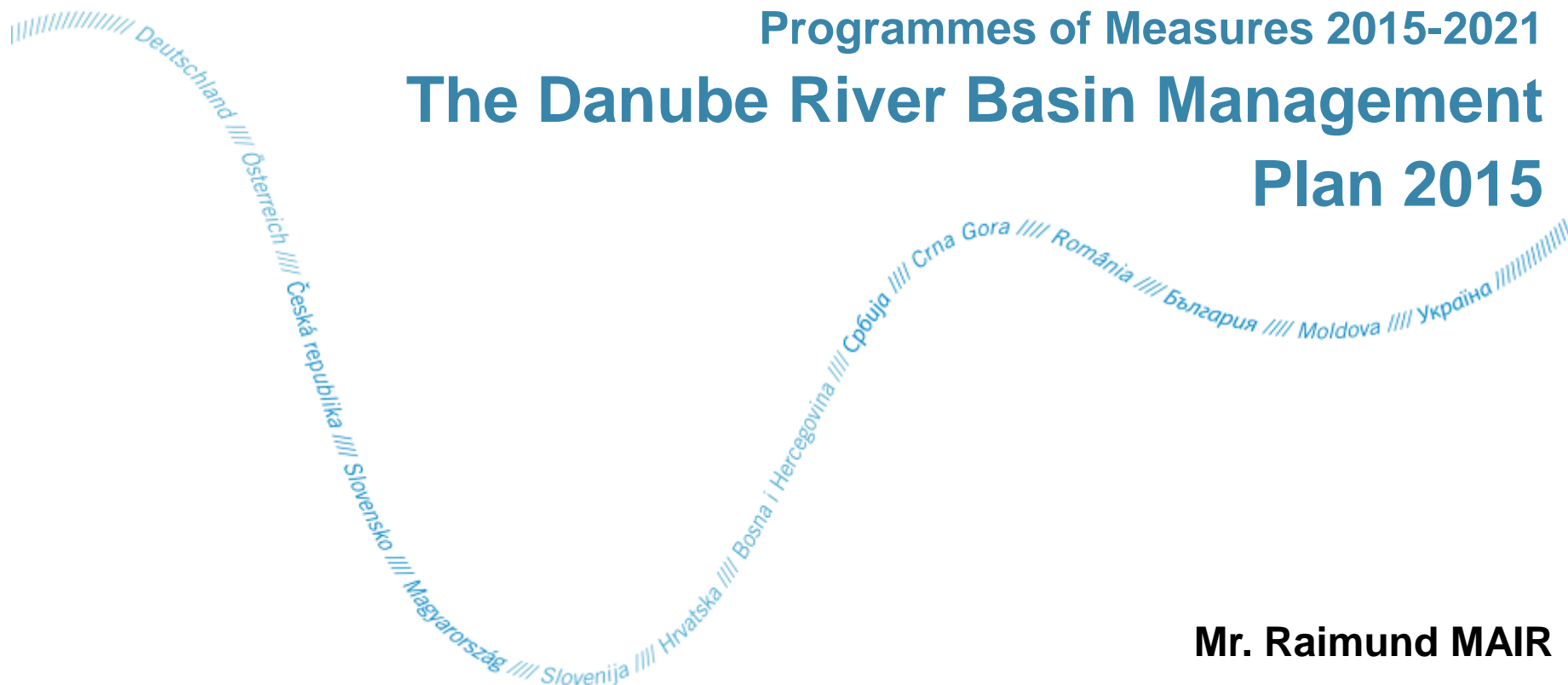
icpdr iksd

International
Commission
for the Protection
of the Danube River

Internationale
Kommission
zum Schutz
der Donau

EU Water Framework Directive and EU Floods Directive -
Programmes of Measures 2015-2021

The Danube River Basin Management Plan 2015



Mr. Raimund MAIR

Technical Expert River Basin Management

International Commission for the Protection of the Danube River (ICPDR)

Raimund.MAIR@unvienna.org

Danube River Protection Convention

icpdr iksd

International
Commission
for the Protection
of the Danube River

Internationale
Kommission
zum Schutz
der Donau

signed 29 June 1994, Sofia (Bulgaria)



Protection of water &
ecological resources



Sustainable use
of water



Reduce nutrients &
hazardous substances



Manage floods
& ice hazards

ICPDR coordinates implementation of
EU Water Framework Directive & EU
Floods Directive on basin-wide level



EU Water Framework Directive

Step-wise implementation



- | | |
|------|---|
| 2000 | WFD entered into force |
| 2003 | Legal transposition into national legislation |
| 2004 | Characterisation and analysis on pressures, impacts and water uses
(1 st Analysis Report) |
| 2006 | Establishment of monitoring programs |
| 2008 | Draft 1 st River Basin Management Plan and launch of public consultation |
| 2009 | Finalisation 1 st River Basin Management Plan incl. Program of Measures |
| 2012 | Report on Implementation of Program of Measures |
| 2013 | Update Analysis Report |
| 2014 | Draft 2 nd River Basin Management Plan and launch of public consultation |
| 2015 | Finalisation 2 nd River Basin Management Plan incl. Program of Measures |
| ... | |
| 2021 | Finalisation 3 rd River Basin Management Plan incl. Program of Measures |
| ... | |
| 2027 | Last deadline for achievement of WFD objective “good status” |

Danube River Basin Management Plan 2015 - 2021

The Danube River Basin District Management Plan – Update 2015

icpdr iksd

International
Commission
for the Protection
of the Danube River
Internationale
Kommission
zum Schutz
der Donau

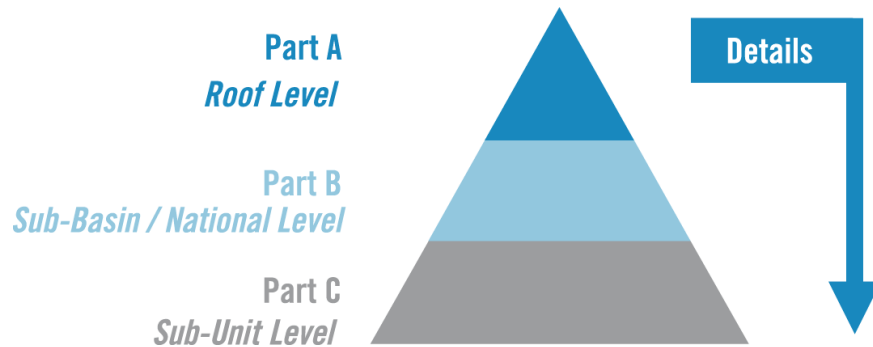
Part A – Basin-wide overview

Document number:
Version: FINAL
Date: 2015-11-17



- WFD planning period 2015 – 2021
- 6 months public consultation
- Includes latest pressures assessment
- Includes latest monitoring data
- **Joint Program of Measures 2015-2021**
- To be adopted by ICPDR on 1-2 December 2015
- To be endorsed at ICPDR Ministerial Conference on 9 February 2016

Coordination mechanisms



**WFD River Basin
Management Planning is
based on three levels of
coordination**

- Part A** International, basin-wide level - the roof level (Danube)
- Part B** National level and/or the internationally coordinated sub-basin level for selected sub-basins (e.g. Sava and Tisza)
- Part C** Sub-unit level, defined as management units in the national territory.

The information increases in detail from **Part A** to **Parts B** and **C**.

Danube River Basin Significant Water Management Issues – “the key pressures”



Organic
Pollution



Nutrient
Pollution



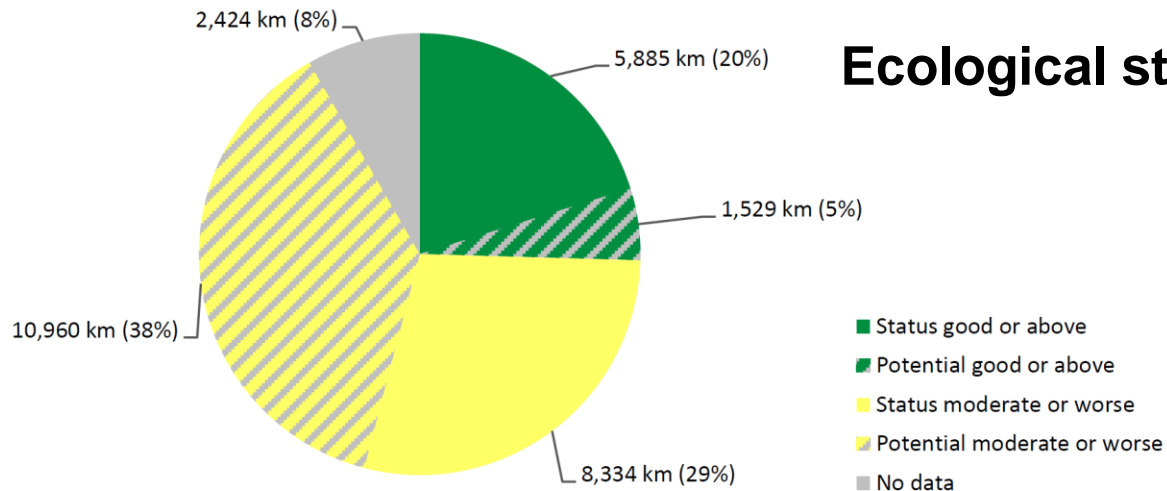
Hazardous
Substances Pollution



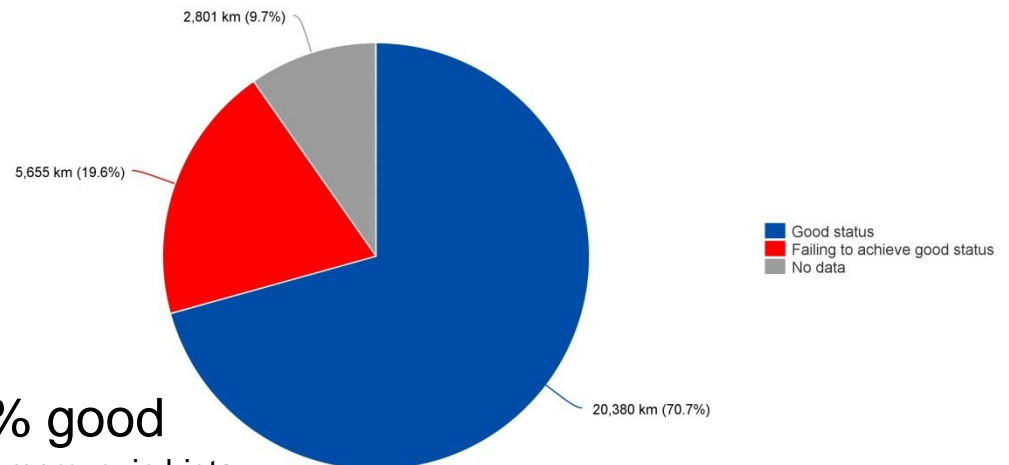
Hydromorphological
Alterations

- **Priorities for actions** – defined via results Analysis Report (pressures assessment) and public involvement
- **Re-discussed every 6 years** (2 years before deadline for next River Basin Management Plan)

Monitoring Results Ecological & Chemical Status



Ecological status: ~ 25% good or above



Chemical status: ~ 70% good

*excluding mercury in biota

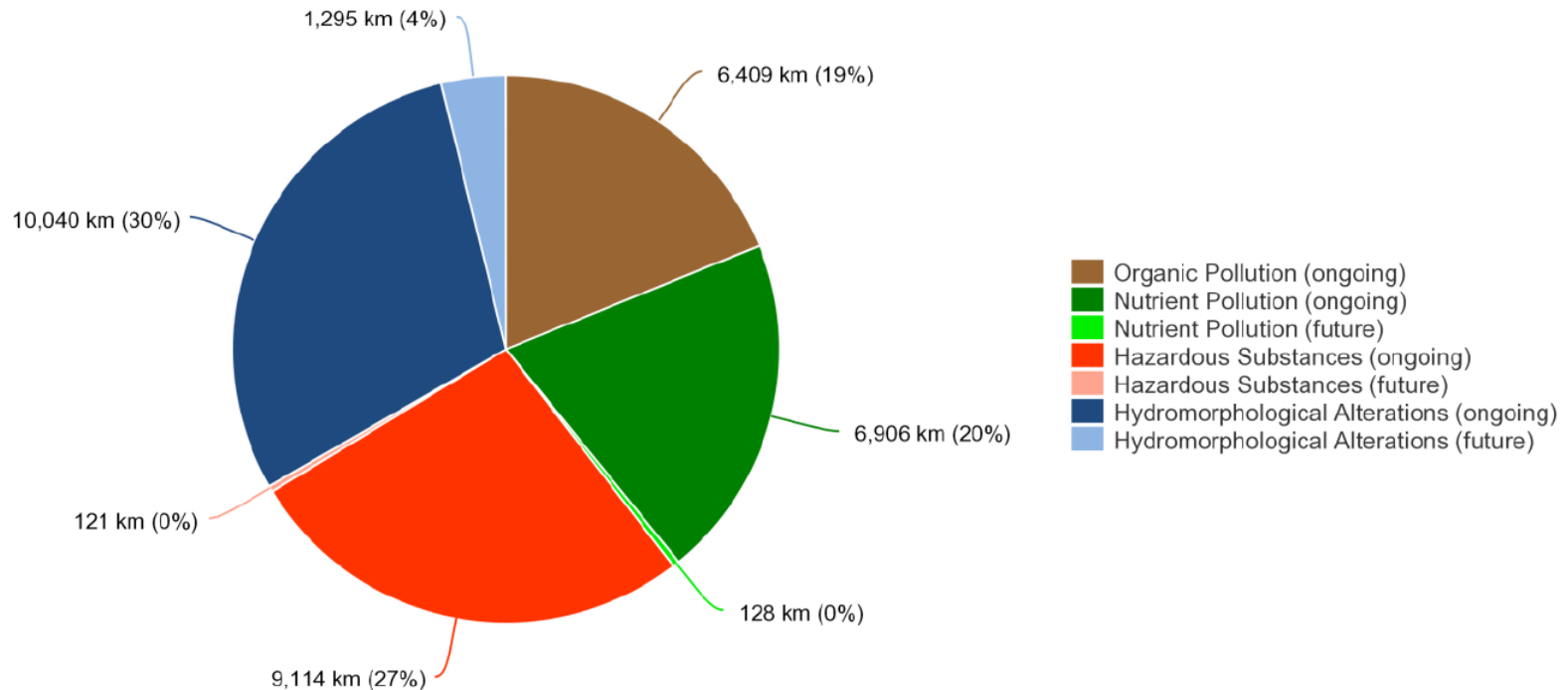
Risk assessment

Main reasons for risk to fail achieving „good status“

icpdr iksd

International
Commission
for the Protection
of the Danube River

Internationale
Kommission
zum Schutz
der Donau



→ Organic, nutrients, hazardous substances pollution, hydromorph. alterations

→ Approx. equal share of reasons for risk to fail „good status“

→ Range of measures in need to be implemented

Example Urban Wastewater Treatment

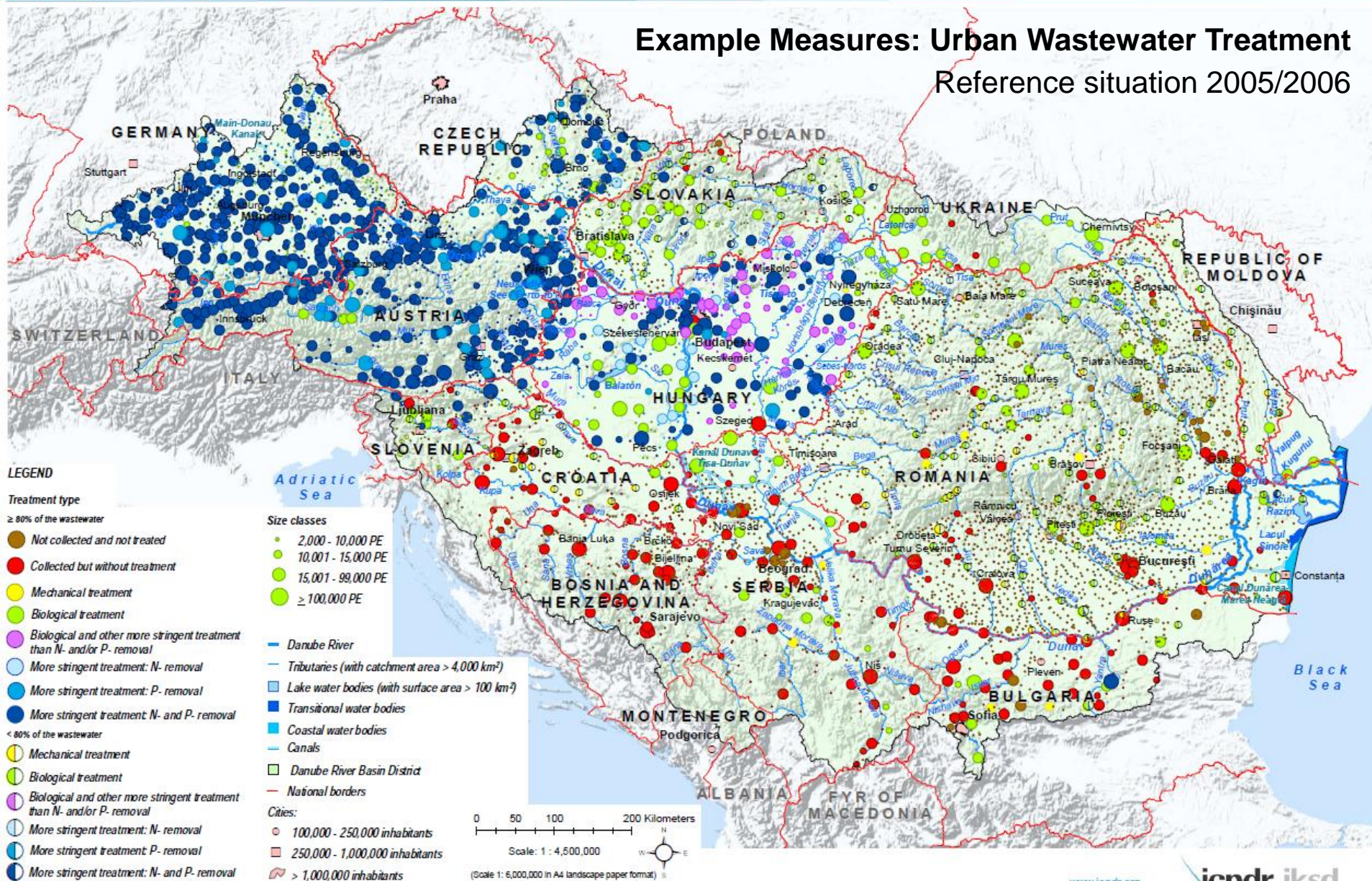
icpdr **iksd**

International
Commission
for the Protection
of the Danube River

Internationale
Kommission
zum Schutz
der Donau

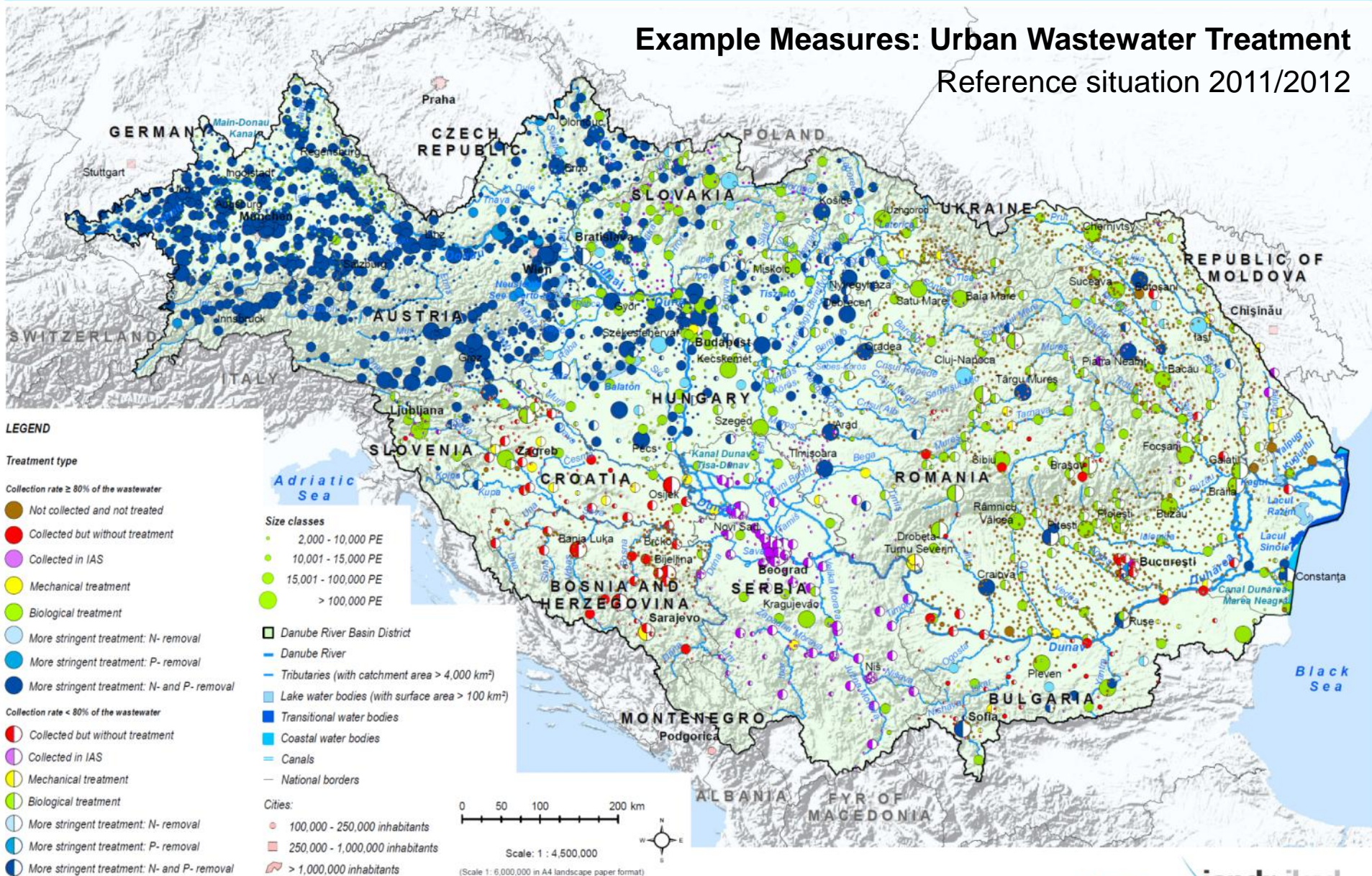


Example Measures: Urban Wastewater Treatment Reference situation 2005/2006



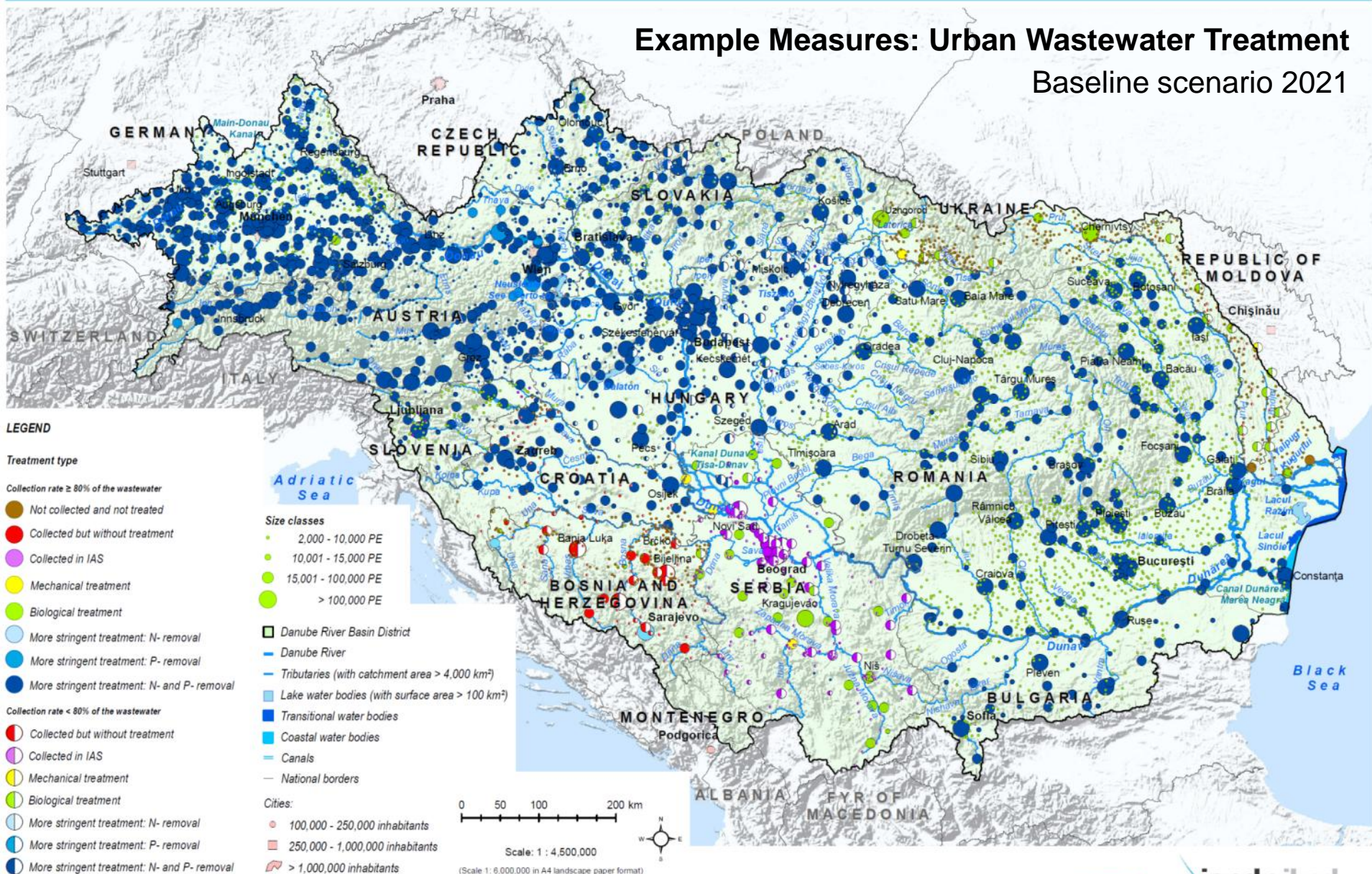
This ICPRD product is based on national information provided by the Contracting Parties to the ICPRD (AT, BA, BG, CZ, DE, HR, HU, MD, RO, RS, SI, SK, UA) and CH, except for the following: EuroGlobalMap v2.1 from EuroGeographics was used for national borders of AT, CZ, DE, HR, HU, MD, RO, SI, SK and UA; ESRI data was used for national borders of AL, ME, MK; Shuttle Radar Topography Mission (SRTM) from USGS Seamless Data Distribution System was used as topographic layer; data from the European Commission (Joint Research Center) was used for the outer border of the DRBD of AL, IT, ME and PL.

Example Measures: Urban Wastewater Treatment Reference situation 2011/2012



This ICPDR product is based on national information provided by the Contracting Parties to the ICPDR (AT, BA, BG, CZ, DE, HR, HU, MD, RO, RS, SI, SK, UA) and CH, except for the following: EuroGlobalMap v2.1 from EuroGeographics was used for national borders of AT, CZ, DE, HR, HU, MD, RO, SI, SK and UA, ESRI data was used for national borders of AL, ME, MK, Shuttle Radar Topography Mission (SRTM) from USGS Seamless Data Distribution System was used as topographic layer, data from the European Commission (Joint Research Center) was used for the outer border of the DRBD of AL, IT, ME and PL.

Example Measures: Urban Wastewater Treatment Baseline scenario 2021

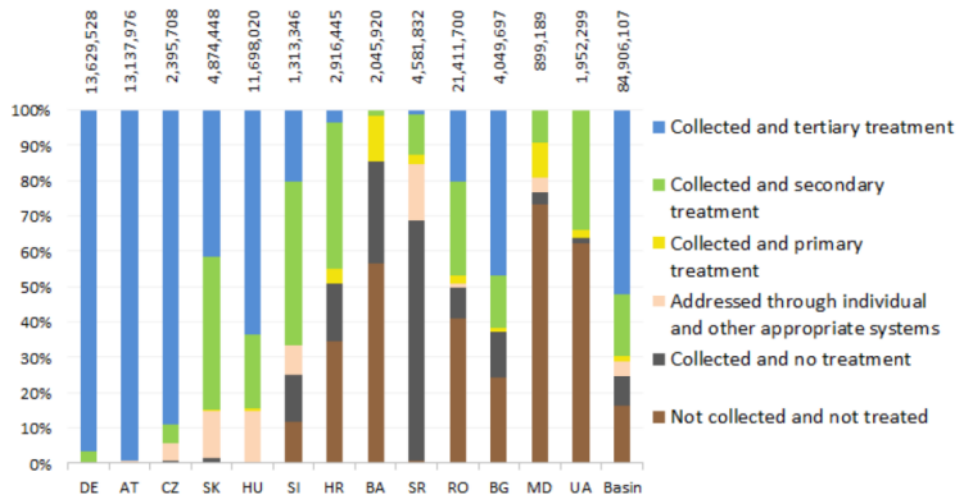


This ICPCR product is based on national information provided by the Contracting Parties to the ICPCR (AT, BA, BG, CZ, DE, HR, HU, MD, RO, RS, SI, SK, UA) and CH, except for the following: EuroGlobalMap v2.1 from EuroGeographics was used for national borders of AT, CZ, DE, HR, HU, MD, RO, SI, SK and UA. ESRI data was used for national borders of AL, ME, MK, Shuttle Radar Topography Mission (SRTM) from USGS Seamless Data Distribution System was used as topographic layer, data from the European Commission (Joint Research Center) was used for the outer border of the DRBM of AL, IT, ME and PL.

Progress and remaining pressures

Example wastewater treatment

Figure 7: Share of the collection and treatment stages in the total population equivalents in the Danube countries (reference year: 2011/2012, absolute numbers on the top refer to PE)

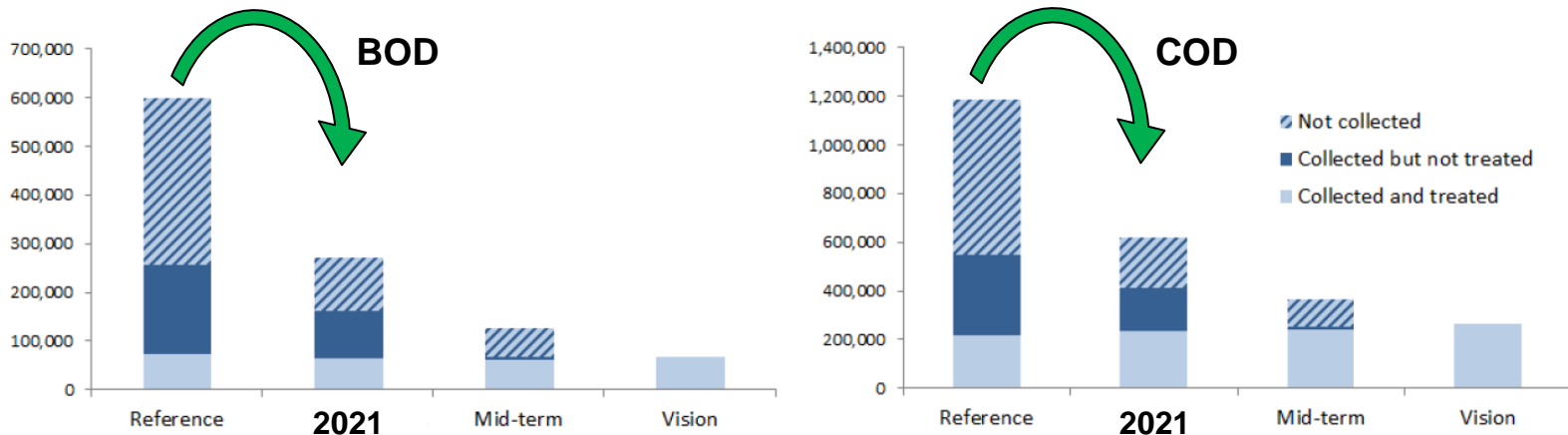


- **Significant progress** in emission reduction
 - **Almost 900 agglomerations with improved UWW infrastructure by 2015 (construction, extension and upgrade)**
 - **Additional 1.000 to come - half under construction**
- **Further efforts** to be taken for full UWWT Directive implementation

Example Joint Program of Measures 2015 - 2021

- Further investments in sewer systems and urban wastewater treatment (UWWTD)
 - Reduction of pollution from industrial sources (BAT)
- ➔ Expected **reduction** of organic **emissions by half** and further reduction of nutrient emissions

Figure 46: BOD (left) and COD (right) emissions via urban waste water according to future scenarios (expressed in tons per year)



Example Agriculture

icpdr iksd

International
Commission
for the Protection
of the Danube River

Internationale
Kommission
zum Schutz
der Donau



Credit: BMLFUW

Agriculture

(EU Nitrates Directive: Application Action Programs)

icpdr iksd

International
Commission
for the Protection
of the Danube River

Internationale
Kommission
zum Schutz
der Donau



Agriculture

(EU Nitrates Directive: Application Action Programs)

icpdr iksd

International
Commission
for the Protection
of the Danube River

Internationale
Kommission
zum Schutz
der Donau



Expected improvements 2021

Nutrient emissions via point sources and diffuse pathways

2021



Expected emission reduction: UWWTP: **10%** (TN) and **17%** (TP), agriculture: **6%** and **4%**

Example Hydromorphology

icpdr **iksd**
International
Commission
for the Protection
of the Danube River
Internationale
Kommission
zum Schutz
der Donau



Natural



Driver/Pressure

Hydropower



HYMO alteration



Navigation



Flood protection



Example hydromorphological alterations

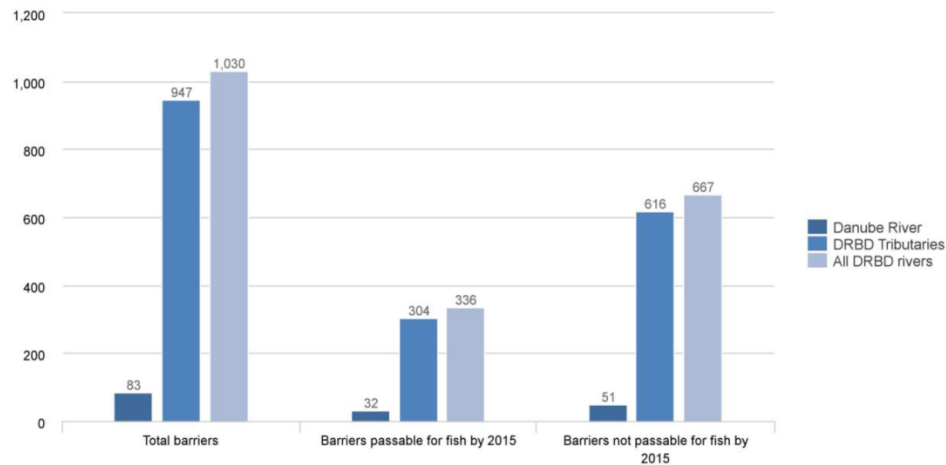
Fish migration aids

icpdr iksd

International
Commission
for the Protection
of the Danube River

Internationale
Kommission
zum Schutz
der Donau

Figure 26: Current situation on river continuity interruption for fish migration in the DRBD



- Progress made: **120+ fish migration aids completed in 2015**
- Construction of **additional 140+ fish migration aids** until 2021
- Securing funding for full **Iron Gates feasibility study**

Further measures to improve river hydromorphology

- Improvement of **river morphology** (river bed, riparian zones)
- Reconnection of 15,000+ ha of **wetlands/floodplains**
- Improvement of impoundments, ensuring **ecological flows**, addressing hydropeaking
- **Sustainability** of future **infrastructure** projects (i.e. flood protection measures, inland navigation, hydropower)



DRBM Plan: Chapter 8.5 & Annex 17

Key EU funding instruments



- European Regional Development Fund (ERDF)
- European Social Fund (ESF)
- Cohesion Fund (CF)
- European Maritime and Fisheries Fund (EMFF)
- European Agricultural Fund for Rural Development (EAFRD)
- LIFE
- INTERREG V/European Territorial Cooperation (ETC)
- European Neighbourhood Instrument (ENI)
- Instrument for Pre-Accession Assistance (IPA II)

+ National funds, Horizon 2020, WB, GEF, EIB, EBRD, ...

Strategic projects

Of key relevance for ICPDR and PA4/5



Danube Sediment Project

(on sediment quantity! – current DTP call 2015)

PROJECT



Tisza Project

(current DTP call 2015)



PROJECT

PROJECT

Danube Floodplain Project

(expected for upcoming DTP call 2016)

DRBM Plan: Chapter 8.5 & Annex 17

Key EU funding instruments



Table 44: Overview SWMIs, measures and potential funding sources

Type of pressure	Measures	Possible financing source/program (EU)	Possible financing source/program (non-EU)
Organic Pollution	UWWTP	ERDF, CF	ENI, IPA II
	Industrial point sources (direct discharges)	ERDF, CF, ESF (capacity building)	ENI, IPA II
	Animal feeding/breeding lots	EAFRD	ENI, IPA II
Nutrient Pollution	Diffuse sources: agriculture	ERDF, EAFRD, LIFE, ESF (capacity building)	ENI, IPA II
	Diffuse sources: atmospheric deposition	EAFRD (concerning agricultural atmospheric emissions)	ENI, IPA II
	Diffuse sources: urban run-off	CF, potentially LIFE	Potentially LIFE, ENI, IPA II
	UWWTP	ERDF, CF	ENI, IPA II
	Industrial point sources (direct discharges)	ERDF, CF, ESF (capacity building)	ENI, IPA II
	Animal feeding/breeding lots	EAFRD	ENI, IPA II

DRBM Plan: Chapter 8.5 & Annex 17

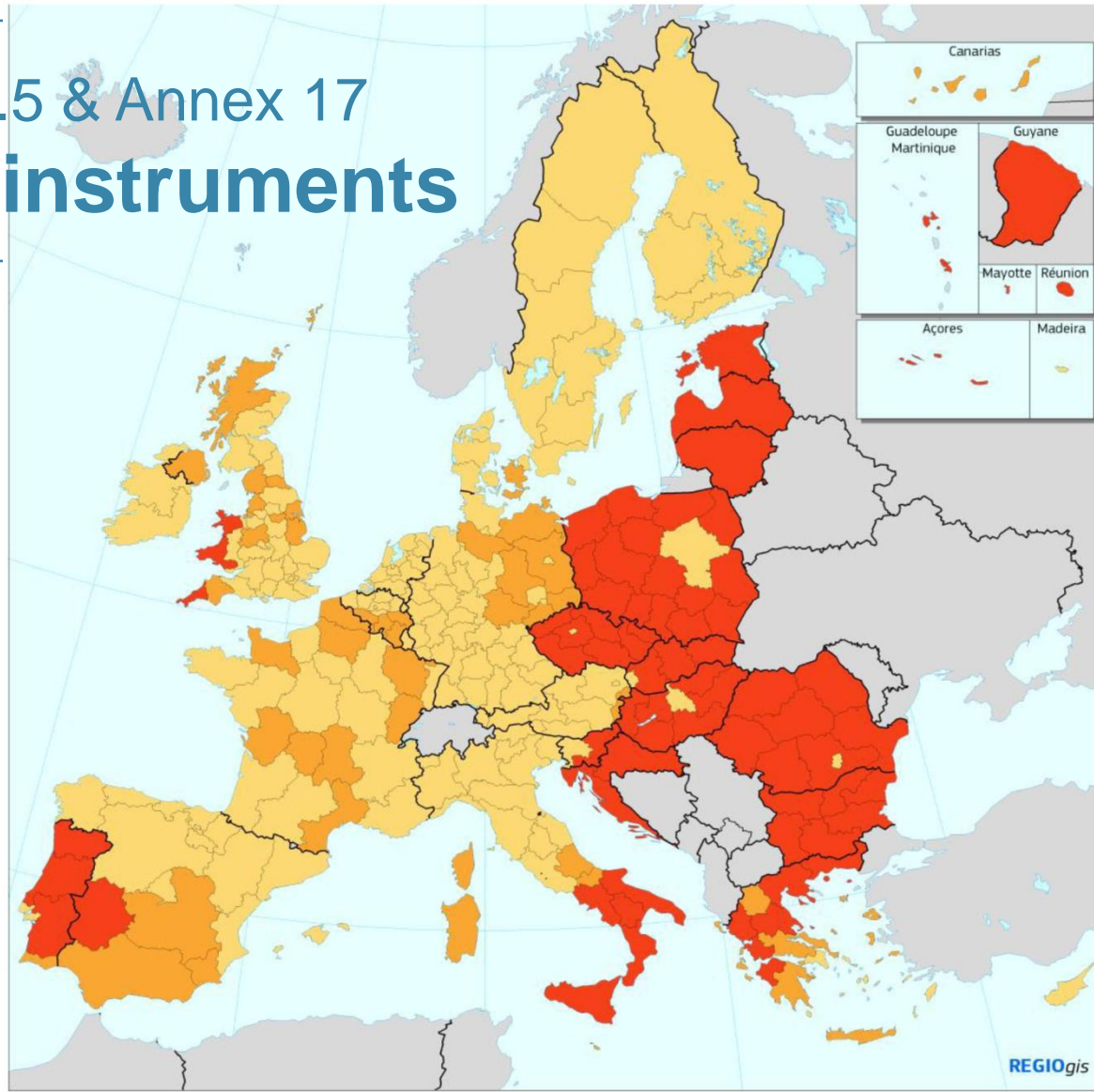
Key EU funding instruments



Type of pressure	Measures	Possible financing source/program (EU)	Possible financing source/program (non-EU)
Hazardous Substances Pollution	Industrial point sources (direct discharges)	ERDF, CF, ESF (capacity building)	ENI, IPA II
	UWWTP	ERDF, CF	ENI, IPA II
	Diffuse sources: urban run-off	ERDF (integrated sustainable urban development measures), CF, potentially LIFE	Potentially LIFE, ENI, IPA II
	Diffuse sources: agriculture	EAFRD, LIFE, ESF (capacity building)	LIFE, ENI, IPA II
	Diffuses sources: landfills, mining sites etc.	Possibly LIFE	Possibly LIFE, ENI, IPA II
Hydromorphological Alterations	Interruption of river continuity and morphological alterations	CF, LIFE	LIFE
	Reconnection of wetlands/floodplains	ERDF, CF (ecosystem-based measures regarding CC adaptation), LIFE, possibly EAFRD (Art. 30 NATURA2000/WFD payments) (see below for more details)	LIFE, ENI, IPA II
	Hydrological alterations (quantity and conditions of flow)	CF, LIFE	LIFE, ENI, IPA II

DRBM Plan: Chapter 8.5 & Annex 17

Key EU funding instruments



**Example:
Structural Funds
eligibility**

Structural Funds (ERDF and ESF) eligibility 2014-2020

Category

- Less developed regions (GDP/head < 75% of EU-27 average)
- Transition regions (GDP/head between $\geq 75\%$ and $< 90\%$ of EU-27 average)
- More developed regions (GDP/head $\geq 90\%$ of EU-27 average)

Conclusions/Remarks

- **The Danube River Basin Management Plan 2015**
 - Milestone for **EU Water Framework Directive** implementation
 - Elaborated (and **agreed**) by the **Danube countries**
 - Sets **water management priorities** for the Danube basin-wide level
 - Outlines **key measures to be implemented until 2021**
- Range of **measures – significant need for financing**
 - ➔ How to best utilise existing funding instruments?
 - ➔ How to strengthen capacities for utilisation of existing funds?
 - ➔ How to ensure funding of measures also in Non-EU Member States?

How can these efforts be further supported?

icpdr iksd

International
Commission
for the Protection
of the Danube River

Internationale
Kommission
zum Schutz
der Donau

Thank you very much!

For more information please consult the ICPDR website

<http://www.icpdr.org>

ICPDR Secretariat / Vienna International Centre, D0412 / P.O. Box 500 / 1400 Vienna / Austria
Phone +43 1 26060-5738 / Fax +43 1 26060-5895 / icpdr@unvienna.org / www.icpdr.org

