

How to get to Vyskumny ustav vodneho hospodarstva (Water Research Institute)?

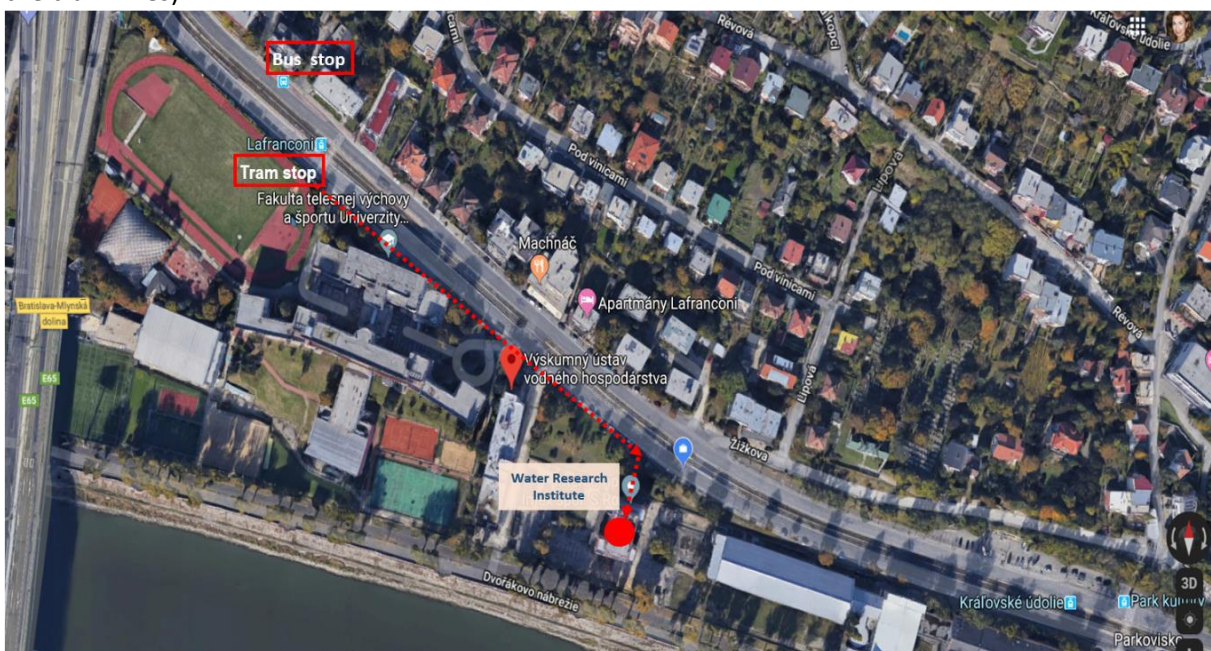
Adress: Nábrežie arm. gen. L. Svobodu 5, 812 49 Bratislava, Slovakia
(see map: <http://www.vuvh.sk/default.aspx?frmName=Contacts&CntP=2>)



By public transport:

- bus no. 29, 30, 31, 37, 39, 133 (bus stop „Lafranconi“) – the Institute is 2 minute walk from the bus/tram stop

tram no. X6 (tram stop „Lafranconi“) (other tram numbers are not operated due to reconstruction of the tram lines)



From Bratislava M. R. Štefánik Airport

bus no. 61, change at stop „Trnavske myto“ to bus 31, 39

From Vienna Airport (Schwechat)

Buses to Bratislava run from the platform no. 4 located in the front of the Vienna airport exit. Bus connection is rather frequent (every 20/30 min. from early morning to the night). Travel takes 50 minutes, ticket price ranges from 5€ to 9€. Tickets can be purchased directly in the bus or in advance - e-tickets (recommended as during the peak hours buses can be fully booked):

FlixBus <https://www.flixbus.sk/autobusove-spoje>

REGIOJET https://www.regiojet.com/?_ga=2.121713347.933641478.1570177392-1694670009.1570177392

SLOVAKLINES <https://www.slovaklines.sk/en/>

Some buses from Vienna airport to Bratislava (Regiojet, Slovaklines) stop at Most SNP (near the city centre). In this case we recommend you to get off there either you travel to your hotel or to directly to WRI. When you travel to WRI take bus 30, 37 or 29 – take off at Lafranconi stop (~ 5 minutes by bus).

From railway station (Bratislava Hlavna stanica):

bus no. 93, at stop „Zochova“ change to bus no. 31 or 39

From railway station (Petržalka) – some trains from Vienna:

From the main bus station (Autobusova stanica Mlynske Nivy):

Bratislava bus station is currently under reconstruction so you will get to the provisional **bus station Bottova Street** (across the street from the former main bus station) when you travel from Vienna airport. To get to the City centre or WRI you can use bus no.70 from the „**Košická, autobusová stanica**“ or **Pristavna stop**, (5 minute walk) – direction towards Most SNP.

<https://imhd.sk/ba/schedule-timetable/linka/70/smer/Most-SNP/zastavka/Kosicka-Autobusova-stanica/838860963882?d=20191005>

When you take bus no.70, change at Most SNP to bus no. 29, 30, 37, 133 – take off at Lafranconi stop (~ 5 minutes by bus). Trams are not convenient at the moment because you would need one more change at Chatam Sofer stop due to reconstruction of the tramlines.

Hotel information :

- Hotel Sorea Regia – 10 min. walk from the Institute <http://www.sorea.sk/en/bratislava/hotel-sorea-regia/kontakt/>
 - Hotel Ibis Bratislava Centrum – 2 tram stops from the institute (tram no. 5, 9), in the city centre - <http://www.booking.com/hotel/sk/ibis-bratislava-centrum.sk.html>
 - Hotel Devín - <https://www.booking.com/hotel/sk/devin>
 - <https://www.radissonhotels.com/en-us/hotels/park-inn-bratislava-danube>
 - <https://www.arcadia-hotel.sk/>
 - <http://www.arthotelwilliam.sk/>
- or any other hotel via booking.com near Bratislava city centre