

CAMARO-D

PROLINE-CE

Two projects in different programs connected by a common message

Common Lead Partner:

**BUNDESMINISTERIUM FÜR
NACHHALTIGKET UND TOURISMUS**

Austrian Federal Ministry of
Sustainability and Tourism



PROLINE-CE: THE PROJECT

Part 1
Funding
Facts& Figures
Partnership

Part 2
Objectives &
Target groups
Solutions

Part 3
Structure &
Timeline
Workpackages

Part 5
Outputs &
Results



Facts & Figures

Priority

3. Cooperating on natural and cultural resources for sustainable growth in CENTRAL EUROPE

Programme objective

3.1 To improve integrated environmental management capacities for the protection and sustainable use of natural heritage and resources

Duration

01.07.2016 - 30.06.2019 (36 months)

Partners

13 partners and 5 ASP from 8 countries

Total budget

€ 2.750.209,47

Thereof ERDF funds

€ 2.267.296,07



PART 1 - PARTNERSHIP

- ★ 13 partners
from 7 countries
- ★ 5 associated partners
from 4 countries



PART 1 - PARTNERSHIP

Austria	Slovenia	Hungary	Croatia	Italy	Poland	Germany	Slovakia
PP1 (LP)	PP4	PP14	PP8	PP9	PP10	PP12	AP15
BMLFUW Austrian Federal Ministry of Agriculture, Forestry, Environment and Water Management	UL University of Ljubljana	HOI Ltd. Herman Ottó Institute Nonprofit Ltd.	HGI-CGS Croatian Geo- logical Survey	ARPAE Reg. Agency for Prevention, Environment and Energy in Emilia-Romagna	KZGW National Water Management Authority	HRBM Technical University of Munich	Global Water Partnership Central and Eastern Europe
PP2	PP5	PP7	AP16	PP13	PP11	AP14	
MA31 Municipality of the City of Vienna, MA31, Vienna Water	JP VO-KA Public Water Utility VODOVOD- KANALIZACIJA Ljubljana	OVF General Directorate of Water Management	Croatian Waters	CMCC Euro-Medi- terranean Centre on Climate Change Foundation	GPW Silesian Water- works PLC	Department of Silviculture and Mountain Forest	
PP3					AP17		
MWY Municipality of Waidhofen/Ybbs					Reg. Water Management Board		
					AP18		
					University of Silesia		



PART 2 - OBJECTIVES & TARGET GROUPS

Main objective

Improved protection of drinking water resources as well as protection against floods/droughts in an integrated land use management approach

Specific objectives

Operationalisation of best practice strategies for water protection

Strategies for the implementation of land-use management concepts for drinking water protection

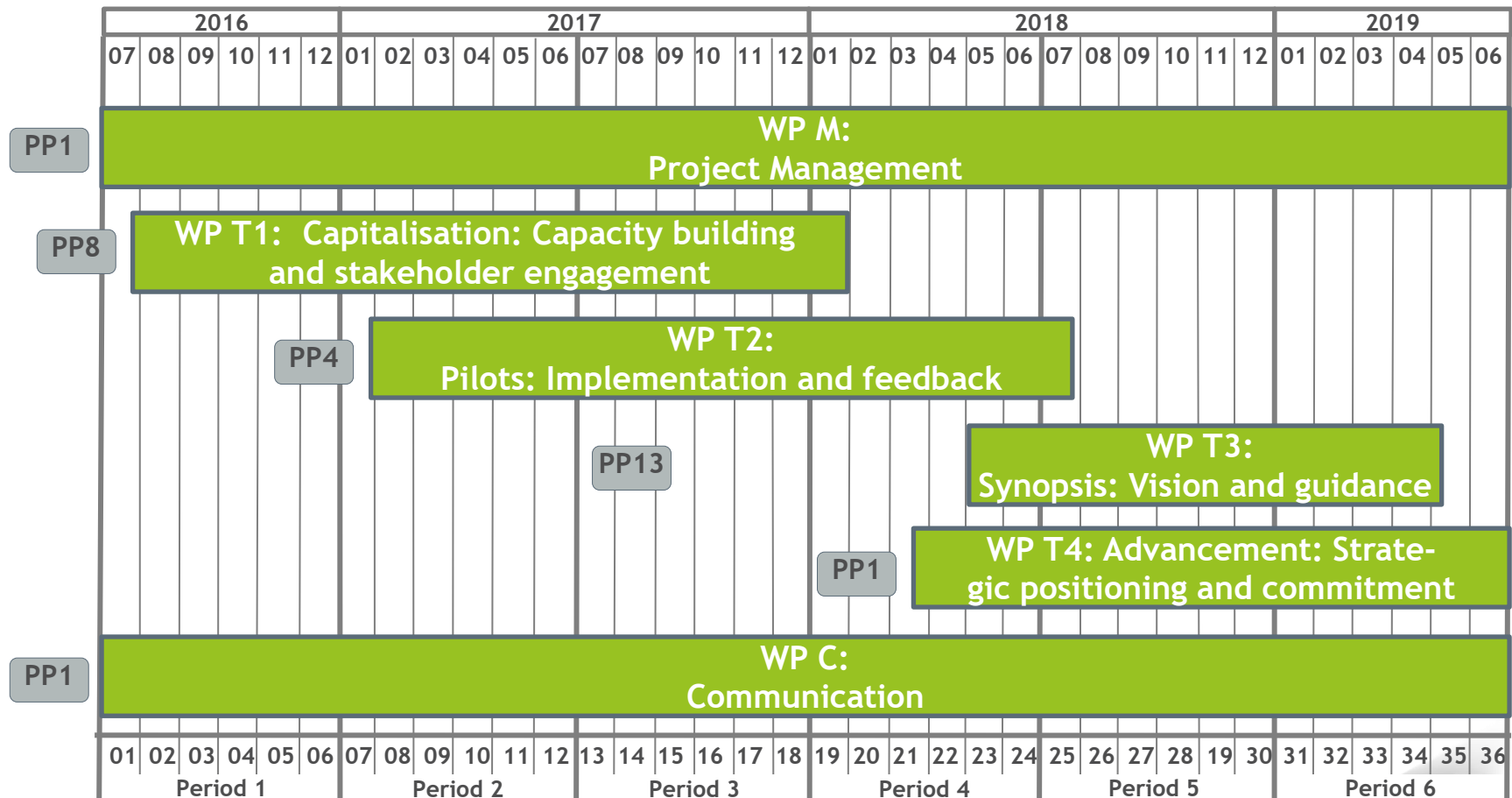
Capacity building for relevant stakeholders and administrations through panel discussions, workshops and dialogues

Target groups

Local, regional & national public authorities; water suppliers; universities and research institutions; interest groups incl. NGOs; international organisations; general public; national park administrations and different services



PART 3 - STRUCTURE & TIMELINE



PART 5 - WORK PACKAGES

PILOT
Mount

PA1.1
Water
Drinkin

PA1.2
Waidh
Drinkin

Transnational map of Pilot Action sites

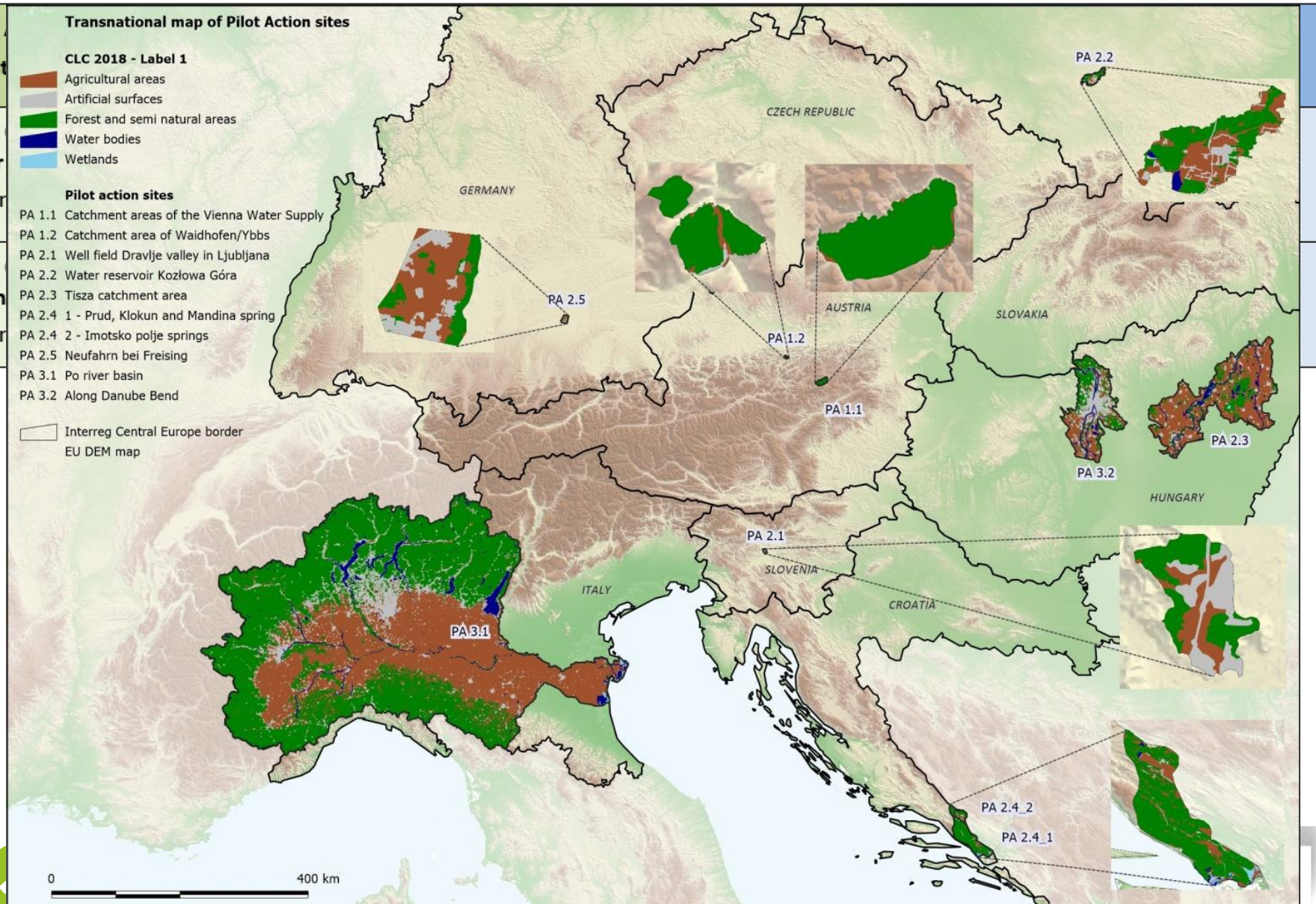
CLC 2018 - Label 1

- Agricultural areas
- Artificial surfaces
- Forest and semi natural areas
- Water bodies
- Wetlands

Pilot action sites

- PA 1.1 Catchment areas of the Vienna Water Supply
- PA 1.2 Catchment area of Waidhofen/Ybbs
- PA 2.1 Well field Dravlje valley in Ljubljana
- PA 2.2 Water reservoir Kozłowa Góra
- PA 2.3 Tisza catchment area
- PA 2.4 1 - Prud, Klokun and Mandina spring
- PA 2.4 2 - Imotsko polje springs
- PA 2.5 Neufahrn bei Freising
- PA 3.1 Po river basin
- PA 3.2 Along Danube Bend

- Interreg Central Europe border
- EU DEM map



W

-

Th

Pr

tr

Re

ht

W

- i

de



PART 6 - OUTPUTS & RESULTS

Project Outputs

Strategies and Action plans

- Strategy for improvement of policy guidelines
- Action plan for adaptation of land use and flood management practices
- DriFLU Charta

Tools

- GOWARE-CE:
Transnational Guide towards an Optimal Water Regime

Pilot action clusters

- Showcasing best management practices for:
- Mountain forests and grasslands
 - Plains: agriculture, grass/wetland
 - Riparian strips & dry areas

Trainings

- Start-up stakeholder workshops
- Stakeholder operationalisation workshops



CAMARO-D

Cooperating towards Advanced Management Routines for land use impacts on the water regime in the Danube river basin



Facts &

Priority

Program

Duration

Partners

Total bu



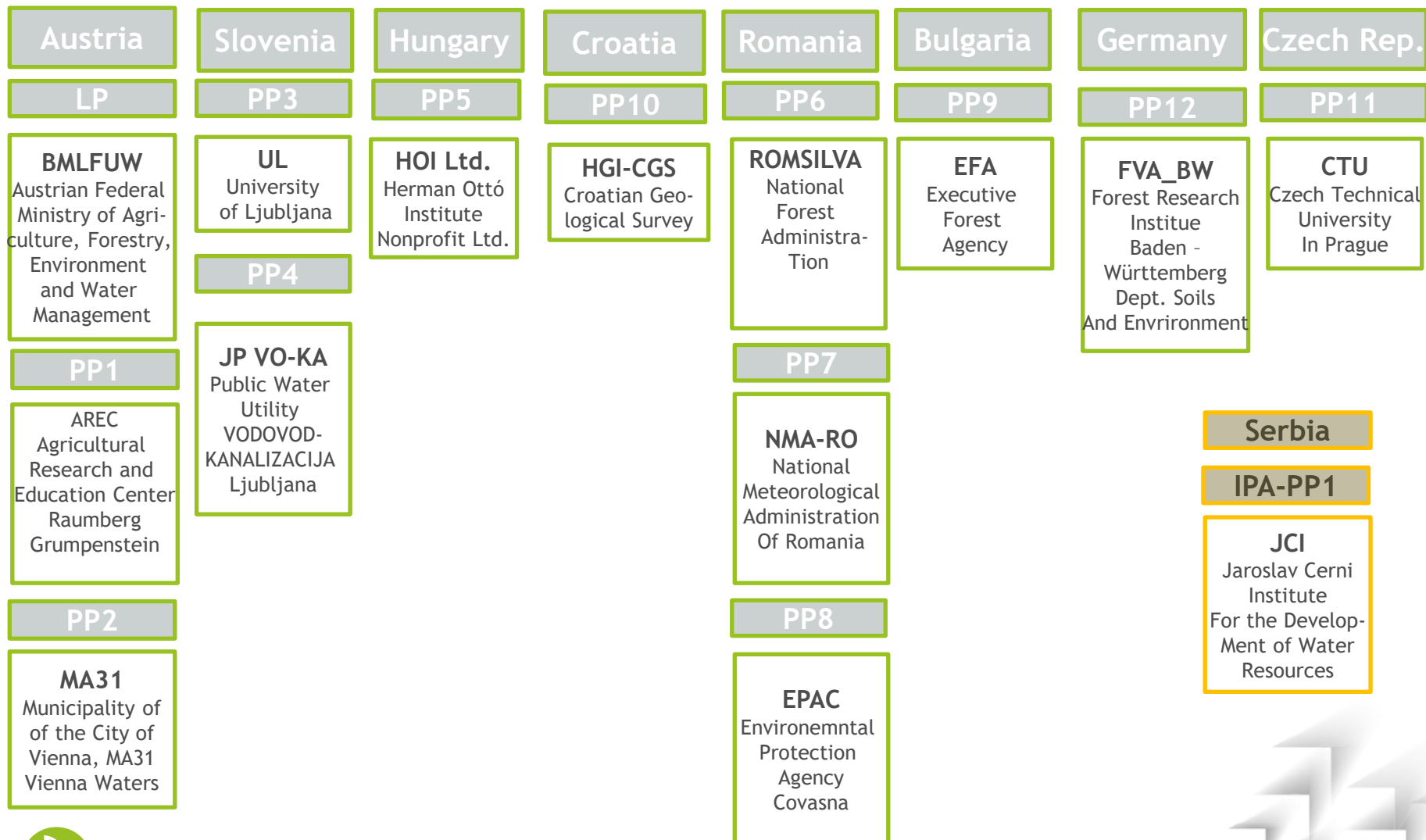
Danube

gement

(AT, SI,



PARTNERSHIP



OBJECTIVES & TARGET GROUPS

Main objective

Improved land use practices for the protection of water resources and flood risk prevention developing comprehensive recommendations towards a strategic policy for the implementation of an innovative transnational catchment-based “Land Use Development Plan” (LUDP)

Specific objectives

➤ **Setting the frame** for a harmonized transnational land use management system in catchment areas, taking into account the demands of water resources protection and flood prevention.

➤ **Harmonizing and improving** the protection of water resources against negative impacts of land use and climate change as well as reduction of flood risk.

➤ **Bringing life** to the project outcomes by translating the most effective and efficient land use management (LUDP) into practice within the pilot actions.

Target groups

Policy makers on national & EU level, Local, regional national public authorities and public services, Research and education, Network institutions on different level, General public



OUTPUTS & RESULTS

Strategies

- **Transnational Land Use Development Plan (LUDP)**

Tools

- Knowledge base
- **GUIDR (Guidance for sustainable land use planning)**
- Transferable implementation manual
- Transferable catalogue for politicians
- Guiding principles for adapted inclusion of LUDP

Pilot action clusters

- 3 pilot action clusters
Land use / vegetation cover
- Protection of **groundwater resources**
- **Torrents, small rivers** and their catchment
- **Rivers** - erosion, floods, soil compaction,

Learning Interactions

- 2 series of takeholder workshops
- 3 thematic Pilot cluster Coordination Meetings
- 3 dialogues and workshops with relevant stakeholders



- Focus of PROLINE-CE project:
 - protection of drinking water sources through integrated land use management
 - developed implementation strategy for harmonized environmental standards in drinking water recharge areas
 - to improve water- and soil quality and reduce flood/drought risks within these areas
- CAMARO-D project focus:
 - land use impacts on the water regime in the Danube river basin
 - setting the frame for a harmonized transnational land use management system
 - taking into account the demands of water resources protection and flood prevention.



THANK YOU FOR YOUR ATTENTION!

Norbert Csatári
csatari.norbert@ovf.hu

www.interreg-central.eu/proline-ce

<http://www.interreg-danube.eu/approved-projects/camaro-d>

