



Sewage sludge Directive

Evaluation of Directive 86/278/EEC

**WORKSHOP ON SEWAGE SLUDGE MANAGEMENT IN THE DANUBE REGION
FOR A GREENER EU**

10 June 2021



European Commission - DG Environment
Sylvie Grajales

The Sewage Sludge Directive (SSD)

Objective: to encourage the correct use of sewage sludge in agriculture and regulate its use in order to prevent harmful effects on soil, vegetation, animals and humans

Rules

How farmers can use sewage sludge as a fertiliser

To ensure **nutrient requirements** of plants and the **quality** of the soil and of the surface and groundwater

Sampling & analysis

Sets concentration limits of 6 heavy metals allowed in soil and sludge

Bans the use of sewage sludge that results in concentrations of these heavy metals in soil **exceeding these limit values**

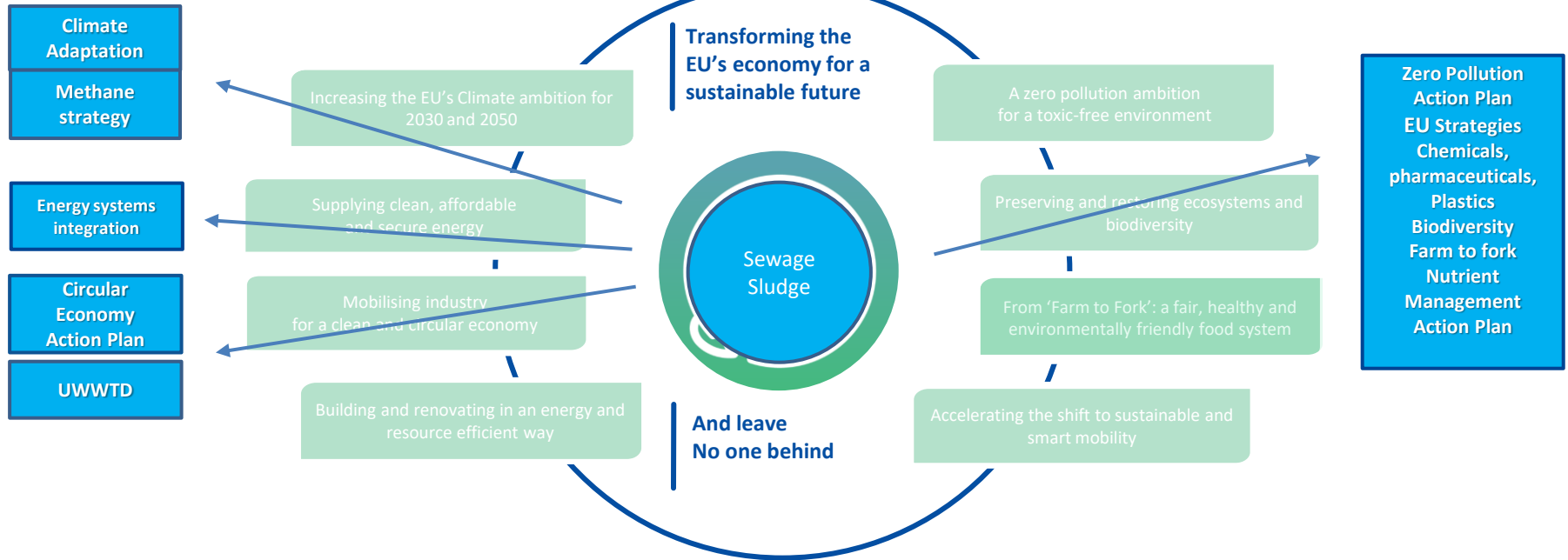
Recording & reporting

Sludge quantities and characteristics, type of treatment

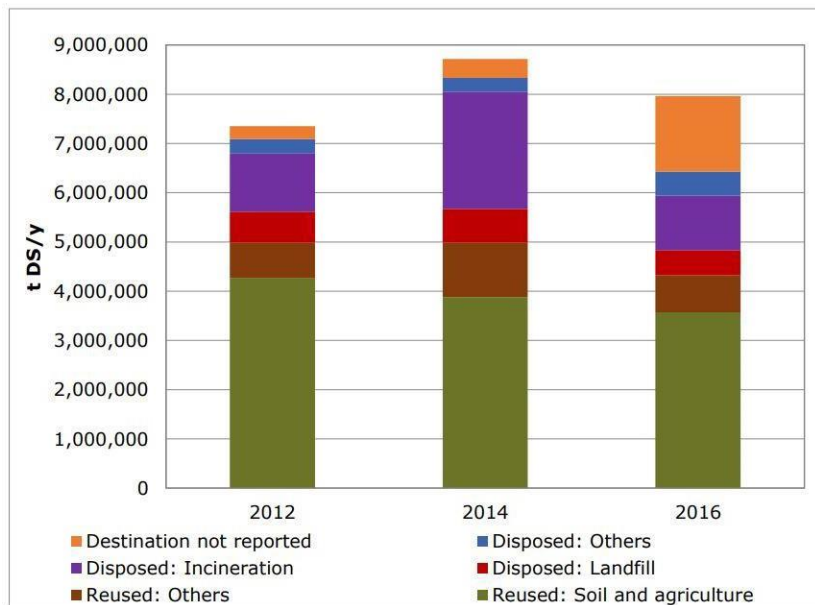
Triennial

Political context

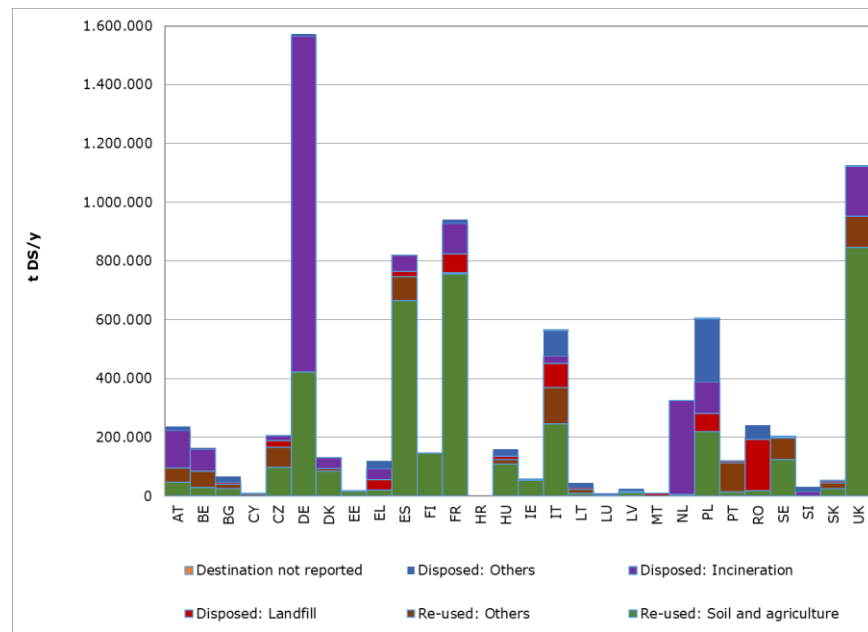
The European Green Deal



Generation and re-use of Sewage sludge



Sewage sludge re-use by destination for period 2012-2016



Sewage sludge re-use per MS in 2016 [% sewage sludge reused in soil and agriculture]

Findings from 2014 Evaluation of the SSD

- Fit for purpose and effective in achieving its objectives
- Induced technological development
- Discouraged disposal
- Increased soil organic matter and water retention

* Ex-post evaluation of certain waste stream Directives BioIntelligence Service et al, (2014)
https://ec.europa.eu/environment/waste/pdf/target_review/Final%20Report%20Ex-Post.pdf

Findings from 2014 Evaluation of the SSD

- SSD did not fully match the needs and expectations:
 - EU circular economy ambitions
 - The potential need to regulate other uses of (treated) sewage sludge
 - Regulation of pollutants in sludge
 - Coherence with the Urban Waste Water Treatment Directive 91/271/EEC (UWWTD)
- Variation of rules among Member States
 - Stricter heavy metal limits than those in the SSD.
 - Limits for other pollutants.
 - Ban of sludge use in agriculture.

On-going Evaluation of the Sewage Sludge Directive 86/278/EC

- Evaluation through standard “Better Regulation” criteria
- Verify, build on and complement the evaluation results of 2014
- Stakeholder consultation
 - ☑ open public consultation
 - ☑ targeted consultation – stakeholders and Member States
 - ☑ workshop for SSD and UWWTD stakeholders

Exploratory study

- ✓ To identify and prioritise pollutants (and their source) that pose risks in relation to the use of sludge and its treatment;
- ✓ To assess and compare the benefits, efficiency, cost-effectiveness of the various recycling/recovery uses and disposal routes of sludge in the EU;
- ✓ To assess the impact of (potential changes in) the UWWTD on the SSD;
- ✓ To create a baseline scenario and business as usual projection;

Revision process

1. Consultation

- Public consultation – closed 5 March 2021
- Targeted consultations of Member States, stakeholders
- Workshop 20-21 April

2. Evaluation report: Spring 2022

3. [Impact assessment]

4. [Legislative proposal]

THANK YOU



For more information:

<https://ec.europa.eu/environment/waste/sludge/>

ENV-WASTE-SEWAGE-SLUDGE-
DIRECTIVE @ec.europa.eu

