



Water Balance model for the Danube basin

EUSDR annual forum
October 23-26, 2023

Marton Pesel



The need for water balance

We lack on a Danube River Basin level:

- to develop a harmonized water balance modelling system in the DRB
- common water balance model for the whole basin instead of different national
- Shared calculation and modelling methods



Basic Project Information

Application Form sent to DRP First Call

Project acronym: **Danube Water Balance**

Project title: **Development of a harmonized water balance modelling system for the Danube River Basin**

Budget: **3 028 319,75 EUR**

Duration: **30 months**

Lead partner: OVF (Hungary) & unofficially co-leader: Srbijavode (Serbia)



DWB Partnership



20 PPs: university or research institute: 9, national public body: 6, sectoral agency: 3, interest group: 1 public service: 1

13 ASPs: ministry: 5, national public body: 4, sectoral agency: 2, public service: 1, research institute: 1



Project content

DTP Specific objective 2.3: **Sustainable, integrated, transnational water and sediment management** in the Danube River Basin **ensuring good quality and quantity of waters** and sediment balance

SO1: Enhanced joint data management for Danube River Basin water management planning (Danube HIS and online data sources)

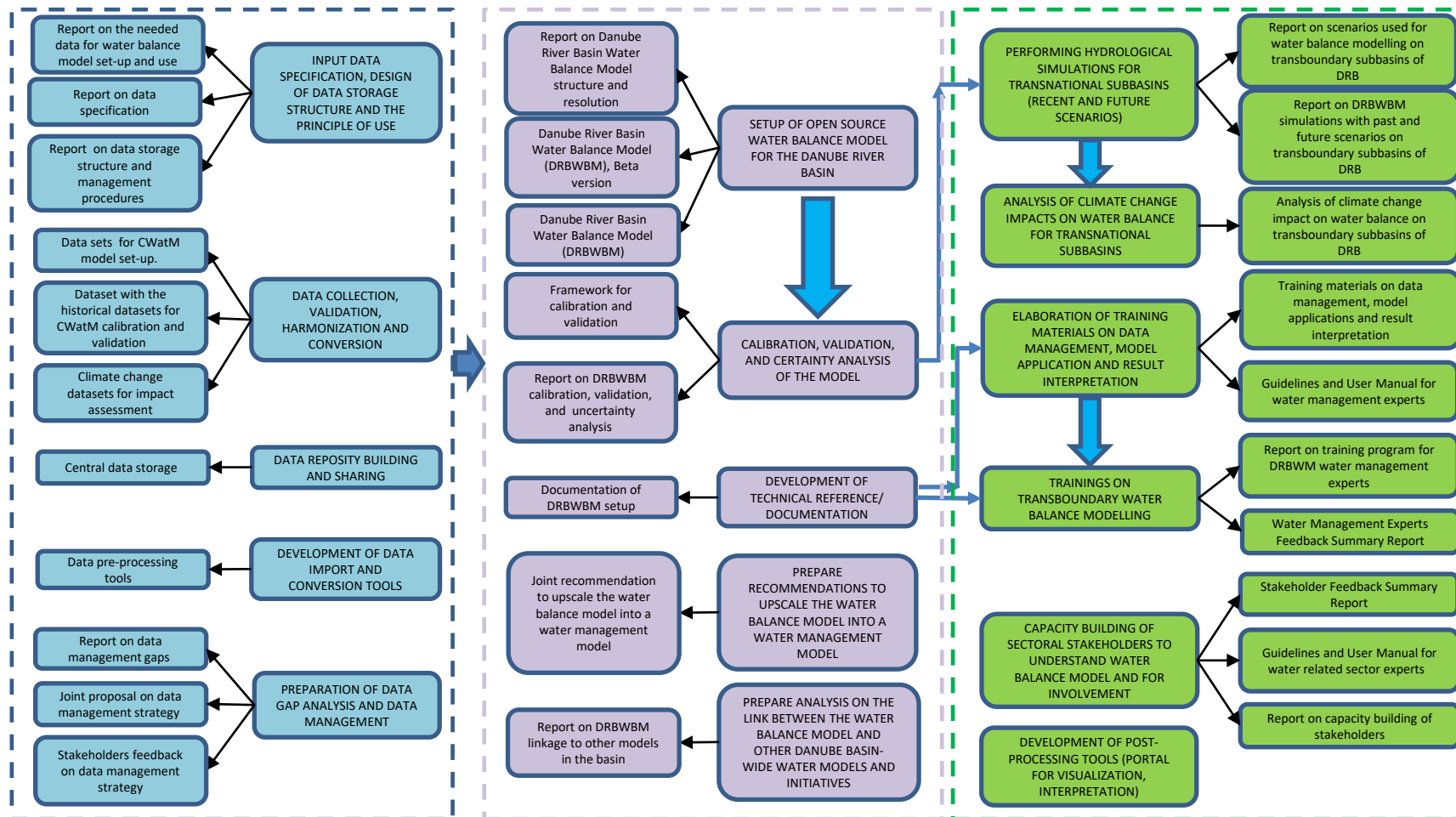
SO2: A jointly developed water balance tool for the Danube River Basin (CWatM a process-based hydrological model coupled with MODFLOW)

SO3: Fostering mutual acceptance of joint water balance methodology through capacity building (including pilot subbasins model application: Tisa, Morava, Upper-Sava and Drina)



Project content in flowchart

OUR WATER VISION





Project outputs

- Harmonized data repository of environmental, hydrological and water management data for the Danube River Basin
- Data import, conversion and validation tools for the enhanced data handling to support harmonized water balance modelling
- Joint data management strategy for the future Danube basin cooperation
- Open-source water balance model for the Danube River Basin
- Toolbox for post- processing, visualization and interpretation of water balance components in the Danube River Basin
- Shared knowledge on joint water balance methodology based on the co-owned DRB WB model
- Stakeholder insight into transboundary subbasin water balance for past and future conditions



Project outputs – benefits of the model

- Open-source water balance model for the Danube River Basin
 - Improved data management for the water balance calculations ,
 - state of the art, open source water balance model for the Danube River Basin,
 - elaborated water balance scenarios for the DRB and 4 selected shared sub basins.



Thank you!

- Thank you for your active participation in the compilation and preparation of the application, as well as your significant contribution to the content, the development of the partnership and the finalization of the administrative tasks. Thanks to
 - Core Drafting Group members
 - ICPDR Secretariat
 - Work package, activity and pilot site leaders, especially colleagues from Romania (SO1), Austria & IIASA (SO2), Serbia (SO3)
 - All partners and associated partners



Thank you for your kind attention!